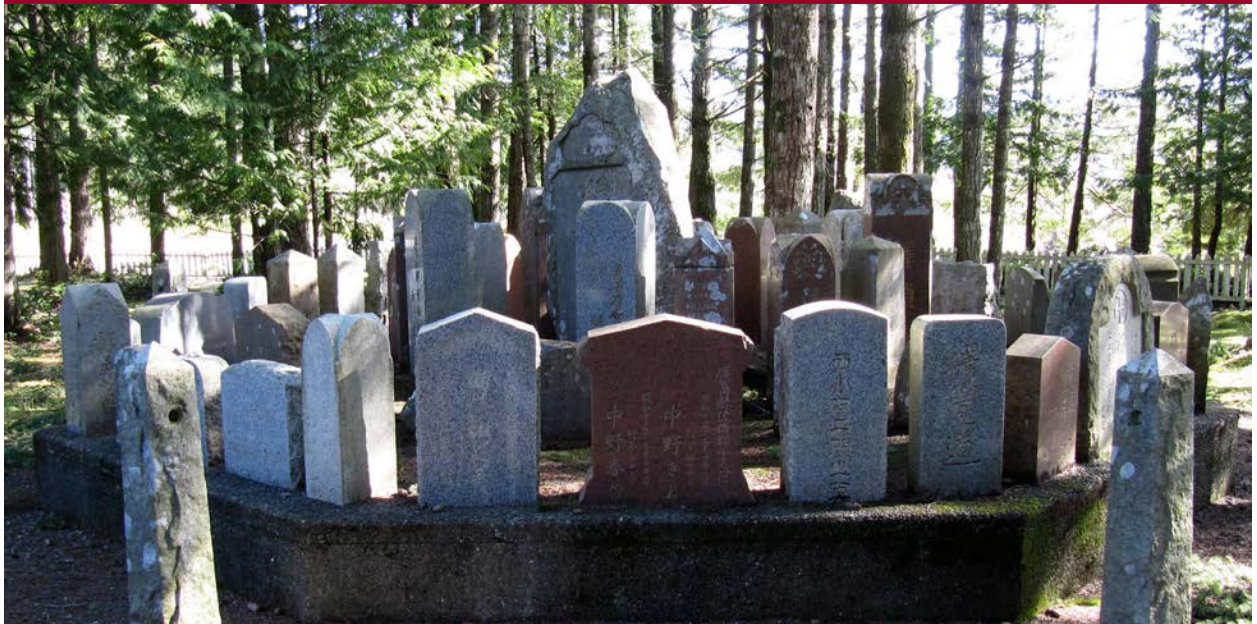




# **Village of Cumberland Heritage Management Plan Volume 2: Heritage Inventory 2016**

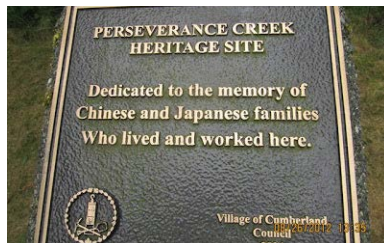


Village of Cumberland Heritage Inventory 2016  
05 December 2016

Denise Cook Design  
Birmingham & Wood Architects and Planners

## Natural Features

1



### CREEKS

(Perseverance, Morrison, Roy, Mallard, and Piercy Creeks)

Values	Theme	Resource Type / Description
<ul style="list-style-type: none"> <li>Ecologically valuable as part of watershed, and associated flora and fauna</li> <li>Social value for history as recreational resource for the region</li> </ul>	<ul style="list-style-type: none"> <li>Land of Plenty</li> <li>Quiet Life, Active Pursuits</li> </ul>	<ul style="list-style-type: none"> <li>Natural features</li> </ul>

2



### LAKES

(Maple Lake, Allen Lake)

Values	Theme	Resource Type / Description
<ul style="list-style-type: none"> <li>Ecologically valuable as part of watershed, and associated flora and fauna</li> <li>Social value for history as recreational resource for the region</li> </ul>	<ul style="list-style-type: none"> <li>Land of Plenty</li> <li>Quiet Life, Active Pursuits</li> </ul>	<ul style="list-style-type: none"> <li>Natural features</li> </ul>

3



### COMOX LAKE

Values	Theme	Resource Type / Description
<ul style="list-style-type: none"> <li>Ecologically valuable as part of watershed, and associated flora and fauna</li> <li>Reservoir for Cumberland</li> <li>Social value for history as recreational resource for the region</li> </ul>	<ul style="list-style-type: none"> <li>Land of Plenty</li> <li>Quiet Life, Active Pursuits</li> </ul>	<ul style="list-style-type: none"> <li>Natural feature</li> </ul>

4



## WILDLIFE (Bear, cougar)

Values	Theme	Resource Type / Description
<ul style="list-style-type: none"> <li>Valuable as part of the natural ecology</li> <li>Social and cultural value as part of the community's sense of being near nature</li> </ul>	<ul style="list-style-type: none"> <li>Land of Plenty</li> <li>Quiet Life, Active Pursuits</li> </ul>	<ul style="list-style-type: none"> <li>Natural resource</li> </ul>

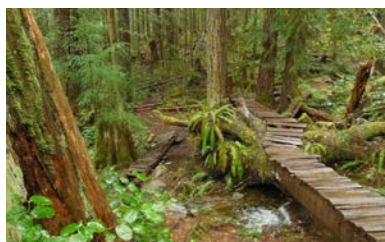
5



## BEAR TRAILS

Values	Theme	Resource Type / Description
<ul style="list-style-type: none"> <li>Valuable as part of the natural landscape</li> <li>Social and cultural value as sign of healthy environment</li> </ul>	<ul style="list-style-type: none"> <li>Land of Plenty</li> <li>Quiet Life, Active Pursuits</li> </ul>	<ul style="list-style-type: none"> <li>Natural resource</li> </ul>

6



## COMMUNITY FOREST AND COVENANTS

Values	Theme	Resource Type / Description
<ul style="list-style-type: none"> <li>Forest valuable as home to indigenous flora and fauna</li> <li>Covenants are an important as a safeguard the community's interest in seeing the continued integrity and existence of the forest</li> <li>Forest contains many remnants from forest harvesting and coal mining days</li> </ul>	<ul style="list-style-type: none"> <li>Land of Plenty</li> <li>Quiet Life, Active Pursuits</li> <li>Mining Coal, Cutting Wood</li> </ul>	<ul style="list-style-type: none"> <li>Culturally modified natural resource</li> </ul>



7



## WETLANDS

Values	Theme	Resource Type / Description
<ul style="list-style-type: none"> <li>Valuable part of Cumberland ecology</li> <li>Recreational resource</li> </ul>	<ul style="list-style-type: none"> <li>Land of Plenty</li> <li>Quiet Life, Active Pursuits</li> </ul>	<ul style="list-style-type: none"> <li>Natural resource</li> </ul>

8



## COAL BEACH (No.4 MINE)

Values	Theme	Resource Type / Description
<ul style="list-style-type: none"> <li>Valuable industrial landscape</li> </ul>	<ul style="list-style-type: none"> <li>Mining Coal, Cutting Wood</li> </ul>	<ul style="list-style-type: none"> <li>Industrial remains</li> </ul>

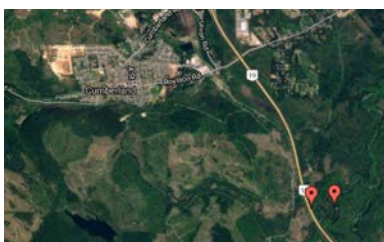
9



## FLOODPLAIN FOREST (BEHIND JAPANESE No.1 TOWN)

Values	Theme	Resource Type / Description
<ul style="list-style-type: none"> <li>Connection between No.1 Japanese Town and Chinatown</li> <li>Wellington Colliery Trail</li> </ul>	<ul style="list-style-type: none"> <li>Land of Plenty</li> <li>Quiet Life, Active Pursuits</li> </ul>	<ul style="list-style-type: none"> <li>Natural resource</li> </ul>

10



## ACCESS TO TRENT RIVER

Values	Theme	Resource Type / Description
<ul style="list-style-type: none"> <li>Valuable aspect of recreational life in Cumberland</li> </ul>	<ul style="list-style-type: none"> <li>Land of Plenty</li> <li>Quiet Life, Active Pursuits</li> </ul>	<ul style="list-style-type: none"> <li>Natural resource</li> </ul>

11



## GLACIAL LANDSCAPES (KETTLES, ESKERS, LAKES, CREEKS)

Values	Theme	Resource Type / Description
<ul style="list-style-type: none"> <li>Valuable as dramatic natural history of the area</li> </ul>	<ul style="list-style-type: none"> <li>Land of Plenty</li> </ul>	<ul style="list-style-type: none"> <li>Natural resource</li> </ul>

12



## WETLANDS AND MARSHES

Values	Theme	Resource Type / Description
<ul style="list-style-type: none"> <li>Ecologically valuable as part of watershed, and associated flora and fauna</li> <li>Social value as a distinct place of recreation</li> </ul>	<ul style="list-style-type: none"> <li>Land of Plenty</li> <li>Quiet Life, Active Pursuits</li> </ul>	<ul style="list-style-type: none"> <li>Natural resource</li> </ul>

13



## BEAUFORT MOUNTAIN RANGE

Values	Theme	Resource Type / Description
<ul style="list-style-type: none"> <li>Ecologically valuable as part of watershed, and associated flora and fauna</li> <li>Social value as a distinct place of recreation</li> </ul>	<ul style="list-style-type: none"> <li>Land of Plenty</li> <li>Quiet Life, Active Pursuits</li> </ul>	<ul style="list-style-type: none"> <li>Natural resource</li> </ul>

14



## UNDERGROUND CREEKS

Values	Theme	Resource Type / Description
<ul style="list-style-type: none"> <li>· Originating in glacial till</li> <li>· Headwaters of various creeks (such as Roy, Piercy, Millard, and Morrison Creeks)</li> <li>· Ecologically valuable as part of watershed</li> </ul>	<ul style="list-style-type: none"> <li>· Land of Plenty</li> </ul>	<ul style="list-style-type: none"> <li>· Natural resource</li> </ul>

15



## DARK SKIES

Values	Theme	Resource Type / Description
<ul style="list-style-type: none"> <li>· Environmental, cultural and social value as a distinct quality of being away of night floodlighting</li> </ul>	<ul style="list-style-type: none"> <li>· Land of Plenty</li> <li>· Quiet Life, Active Pursuits</li> </ul>	<ul style="list-style-type: none"> <li>· Natural resource</li> </ul>

16



## CHINESE AND JAPANESE FOOD AND MEDICINAL PLANTS IN THE FOREST

Values	Theme	Resource Type / Description
<ul style="list-style-type: none"> <li>· Cultural value as a physical remnant of the Chinese mining settlement history</li> <li>· Collecting chanterelles and pine mushrooms</li> <li>· e.g. Japanese medicinal plant Fuki (petasites japonica)</li> </ul>	<ul style="list-style-type: none"> <li>· Land of Plenty</li> <li>· Quiet Life, Active Pursuits</li> <li>· Coal Mining, Cutting Wood</li> </ul>	<ul style="list-style-type: none"> <li>· Culturally modified natural resource</li> </ul>

17



## BEAVER ECOSYSTEMS

Values	Theme	Resource Type / Description
<ul style="list-style-type: none"> <li>Ecologically valuable as part of watershed</li> <li>Valuable ecology for flora and fauna</li> </ul>	<ul style="list-style-type: none"> <li>Land of Plenty</li> </ul>	<ul style="list-style-type: none"> <li>Natural resource</li> </ul>

18



## TREES AND SPECIMEN TREES

Values	Theme	Resource Type / Description
<ul style="list-style-type: none"> <li>Ecologically valuable as part of watershed</li> <li>Valuable ecology for flora and fauna</li> <li>Educational value as examples of native and introduced plant species</li> </ul>	<ul style="list-style-type: none"> <li>Land of Plenty</li> <li>Quiet Life, Active Pursuits</li> <li>Mining Coal, Cutting Wood</li> </ul>	<ul style="list-style-type: none"> <li>Natural resources</li> </ul>

## Cultural Landscape Features

19



### FIRST NATIONS LAND

Values	Theme	Resource Type / Description
<ul style="list-style-type: none"> <li>Valuable presence of First Nations in the community</li> </ul>	<ul style="list-style-type: none"> <li>Land of Plenty</li> <li>Developing A Village</li> </ul>	<ul style="list-style-type: none"> <li>Cultural resource</li> </ul>

20



### CUMBERLAND PARKS

Values	Theme	Resource Type / Description
<ul style="list-style-type: none"> <li>Ecologically valuable as part of unbuilt landscape</li> <li>Valuable recreational land</li> </ul>	<ul style="list-style-type: none"> <li>Land of Plenty</li> <li>Quiet Life, Active Pursuits</li> <li>Developing A Village</li> </ul>	<ul style="list-style-type: none"> <li>Natural and cultural landscape resource</li> </ul>

21



### KIWANIS FISH HATCHERY

Values	Theme	Resource Type / Description
<ul style="list-style-type: none"> <li>Ecologically valuable as part of watershed</li> <li>Valuable facility for chinook, chum, and other salmon species</li> </ul>	<ul style="list-style-type: none"> <li>Land of Plenty</li> <li>Quiet Life, Active Pursuits</li> <li>Creating A Diverse Community</li> </ul>	<ul style="list-style-type: none"> <li>Natural resource</li> </ul>



22

**COAL CREEK HISTORIC PARK**

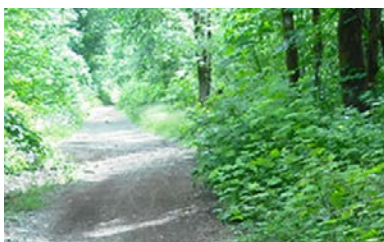
Values	Theme	Resource Type / Description
<ul style="list-style-type: none"> <li>Ecologically valuable as part of unbuilt landscape</li> <li>Centrally important cultural site</li> <li>Valuable recreational land</li> </ul>	<ul style="list-style-type: none"> <li>Land of Plenty</li> <li>Quiet Life, Active Pursuits</li> <li>Developing A Village</li> <li>Creating A Diverse Community</li> </ul>	<ul style="list-style-type: none"> <li>Natural and cultural landscape resource</li> </ul>

23

**NO.6 MINE PARK**

Values	Theme	Resource Type / Description
<ul style="list-style-type: none"> <li>Centrally important cultural site for Cumberland mining history</li> <li>Valuable recreational land</li> </ul>	<ul style="list-style-type: none"> <li>Mining Coal, Cutting Wood</li> <li>Developing A Village</li> </ul>	<ul style="list-style-type: none"> <li>Industry history resource</li> </ul>

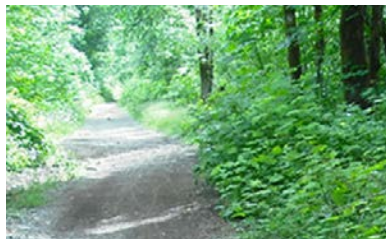
24

**GREENWAYS**

- WELLINGTON COLLIERY RAILWAY RIGHT-OF-WAY
- CHINATOWN TO No.1 JAPANESE TOWN
- ROYSTON ROAD ALONG ULVERSTON TO PEACE PARK

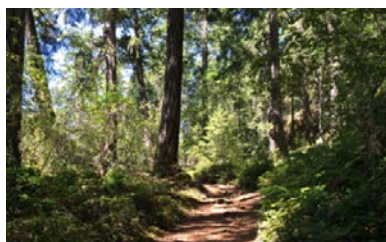
Values	Theme	Resource Type / Description
<ul style="list-style-type: none"> <li>Ecologically valuable as part of unbuilt landscape</li> <li>Valuable recreational land</li> </ul>	<ul style="list-style-type: none"> <li>Quiet Life, Active Pursuits</li> <li>Developing A Village</li> </ul>	<ul style="list-style-type: none"> <li>Natural and cultural landscape resource</li> </ul>

25

**TRAIL CONNECTION TO UNION BAY**

Values	Theme	Resource Type / Description
<ul style="list-style-type: none"> <li>· Cultural historical corridor</li> <li>· Valuable recreational land</li> </ul>	<ul style="list-style-type: none"> <li>· Quiet Life, Active Pursuits</li> <li>· Developing A Village</li> </ul>	<ul style="list-style-type: none"> <li>· Natural and cultural landscape resource</li> </ul>

26

**LOGGING ROADS**

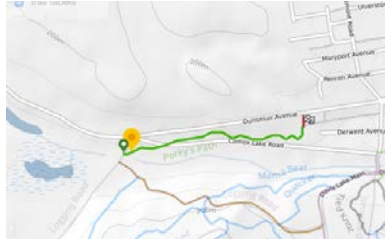
Values	Theme	Resource Type / Description
<ul style="list-style-type: none"> <li>· Cultural historical corridors</li> <li>· Remnants of logging history</li> <li>· Valuable recreational land</li> </ul>	<ul style="list-style-type: none"> <li>· Land of Plenty</li> <li>· Quiet Life, Active Pursuits</li> </ul>	<ul style="list-style-type: none"> <li>· Natural and cultural landscape resource</li> </ul>

27

**HUNTING AND TRAPPING TRAILS**

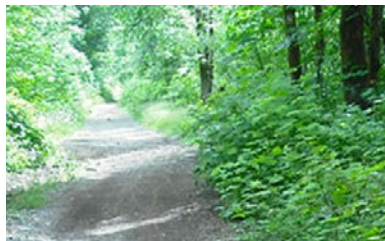
Values	Theme	Resource Type / Description
<ul style="list-style-type: none"> <li>· Cultural historical corridors</li> <li>· Remnants of early culture</li> <li>· Valuable recreational land</li> </ul>	<ul style="list-style-type: none"> <li>· Land of Plenty</li> <li>· Quiet Life, Active Pursuits</li> </ul>	<ul style="list-style-type: none"> <li>· Natural and cultural landscape resource</li> </ul>

28

**PORKY'S PATH**

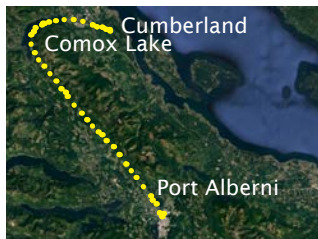
Values	Theme	Resource Type / Description
<ul style="list-style-type: none"> <li>· Cultural historical corridor</li> <li>· Valuable recreational corridor</li> </ul>	<ul style="list-style-type: none"> <li>· Land of Plenty</li> <li>· Quiet Life, Active Pursuits</li> </ul>	<ul style="list-style-type: none"> <li>· Natural and cultural landscape resource</li> </ul>

29

**RAILWAY LINE REMNANTS WITHIN CUMBERLAND (BEDS, TRAILS, AND RIGHTS-OF-WAY)**

Values	Theme	Resource Type / Description
<ul style="list-style-type: none"> <li>· Cultural historical corridors</li> <li>· Remnants of logging history</li> <li>· Valuable recreational land</li> </ul>	<ul style="list-style-type: none"> <li>· Land of Plenty</li> <li>· Quiet Life, Active Pursuits</li> <li>· Mining Coal, Cutting Wood</li> <li>· Developing A Village</li> </ul>	<ul style="list-style-type: none"> <li>· Natural and cultural landscape resource</li> </ul>

30

**FIRST NATIONS TRAILS**

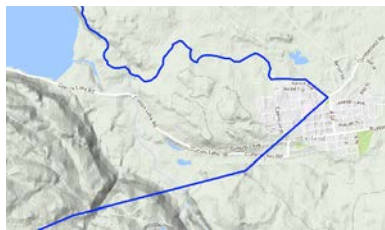
Values	Theme	Resource Type / Description
<ul style="list-style-type: none"> <li>· Routes (whether trails or waterways) from sea to Comox Lake via Puntledge River; also Perseverance Creek)</li> <li>· Part of route through to area where Port Alberni is located</li> <li>· Cultural historical corridors</li> <li>· Valuable recreational land</li> </ul>	<ul style="list-style-type: none"> <li>· Land of Plenty</li> <li>· Creating a Diverse Community</li> </ul>	<ul style="list-style-type: none"> <li>· Natural and cultural landscape resource</li> </ul>

31

**AIR QUALITY**

Values	Theme	Resource Type / Description
<ul style="list-style-type: none"> <li>Environmental, cultural and social value as a distinct quality of the place</li> </ul>	<ul style="list-style-type: none"> <li>Land of Plenty</li> <li>Quiet Life, Active Pursuits</li> </ul>	<ul style="list-style-type: none"> <li>Natural resource</li> </ul>

32

**VANCOUVER ISLAND SPINE TRAIL ASS'N. (VISTA) TRAIL**

Values	Theme	Resource Type / Description
<ul style="list-style-type: none"> <li>Cultural historical corridor</li> <li>Part of walking route along mountain ranges that will allow Cumberland to be a stopping point</li> </ul>	<ul style="list-style-type: none"> <li>Land of Plenty</li> <li>Quiet Life, Active Pursuits</li> </ul>	<ul style="list-style-type: none"> <li>Natural and cultural landscape resource</li> </ul>

33

**COMPANY FARM (UNION ROAD)**

Values	Theme	Resource Type / Description
<ul style="list-style-type: none"> <li>Valued as an historical landscape</li> <li>Valued as a remnant of newcomer settlement</li> <li>Sites where mules were rested</li> <li>Later use as summer vacation site - now no longer</li> <li>Present location of sewage treatment lagoons</li> </ul>	<ul style="list-style-type: none"> <li>Land of Plenty</li> <li>Developing A Village</li> </ul>	<ul style="list-style-type: none"> <li>Culturally modified landscape resource</li> </ul>

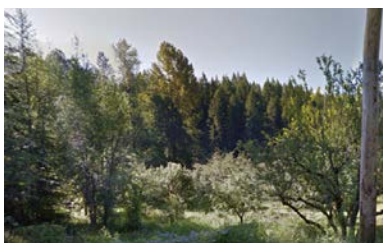
34



### URBAN AGRICULTURE (PRIVATE GARDENS)

Values	Theme	Resource Type / Description
<ul style="list-style-type: none"> <li>Ecologically valuable as part of unbuilt land</li> <li>Valued as source of local food production</li> <li>In some cases recollection of Chinese domestic gardening</li> </ul>	<ul style="list-style-type: none"> <li>Land of Plenty</li> <li>Quiet Life, Active Pursuits</li> </ul>	<ul style="list-style-type: none"> <li>Cultural modified landscape resource</li> </ul>

35



### ORCHARDS AND ORCHARD REMNANTS

- ROTARY PARK
- CHINATOWN
- BOTTOM OF CAMP ROAD

Values	Theme	Resource Type / Description
<ul style="list-style-type: none"> <li>Ecologically valuable as part of unbuilt land</li> <li>Remnant of historical small scale fruit production</li> <li>Maintenance contribution by Rotary Club valued for community involvement</li> </ul>	<ul style="list-style-type: none"> <li>Land of Plenty</li> <li>Quiet Life, Active Pursuits</li> </ul>	<ul style="list-style-type: none"> <li>Cultural modified landscape resource</li> </ul>

36



### ALLEYWAYS

Values	Theme	Resource Type / Description
<ul style="list-style-type: none"> <li>Valued as a culturally rich landscape in town</li> </ul>	<ul style="list-style-type: none"> <li>Quiet Life, Active Pursuits</li> <li>Developing A Village</li> </ul>	<ul style="list-style-type: none"> <li>Cultural modified landscape resource</li> </ul>



37



## CHINESE AND JAPANESE CANADIAN CEMETERIES

Values	Theme	Resource Type / Description
<ul style="list-style-type: none"> <li>Ecologically valuable as part of unbuilt land</li> <li>Centrally important cultural marker of historically diverse communities</li> </ul>	<ul style="list-style-type: none"> <li>Land of Plenty</li> <li>Developing A Village</li> <li>Creating a Diverse Community</li> </ul>	<ul style="list-style-type: none"> <li>Cemetery</li> </ul>

38



## WRECK SITE AT TRENT RIVER TRESTLE

Values	Theme	Resource Type / Description
<ul style="list-style-type: none"> <li>Remains of important event in rail history of Cumberland</li> </ul>	<ul style="list-style-type: none"> <li>Mining Coal, Cutting Wood</li> </ul>	<ul style="list-style-type: none"> <li>Industrial remains</li> </ul>

39



## THREE CAIRNS (ON THE ROAD TO COMOX LAKE)

- BLACK COMMUNITY
- No.4 MINE
- CHINATOWN

Values	Theme	Resource Type / Description
<ul style="list-style-type: none"> <li>Commemorates historical aspects of the community</li> </ul>	<ul style="list-style-type: none"> <li>Mining Coal, Cutting Wood</li> <li>Creating A Diverse Community</li> </ul>	<ul style="list-style-type: none"> <li>Cairns</li> </ul>

40



## STREET DRAINAGE DITCHES

Values	Theme	Resource Type / Description
<ul style="list-style-type: none"> <li>Valued for being a traditional country road feature</li> </ul>	<ul style="list-style-type: none"> <li>Developing A Village</li> </ul>	<ul style="list-style-type: none"> <li>Traditional urban landscape form</li> </ul>

41

**COAL SLAG PILES**

- No.1 MINE JAPANESE TOWN
- No.2 CHINATOWN

Values	Theme	Resource Type / Description
<ul style="list-style-type: none"> <li>• Marks the infrastructure for the transportation of coal to market</li> </ul>	<ul style="list-style-type: none"> <li>• Mining Coal, Cutting Wood</li> </ul>	<ul style="list-style-type: none"> <li>• Industrial remains</li> </ul>

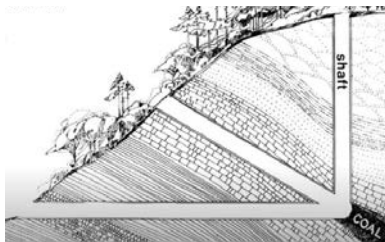
42

**MINE SITES AND BUILDINGS IN THE FOREST**

- No.4 MINE FANHOUSE AND SUBSTATION

Values	Theme	Resource Type / Description
<ul style="list-style-type: none"> <li>• Together the sites mark the extent and geographical range of development associated with mining and development of the Cumberland region</li> </ul>	<ul style="list-style-type: none"> <li>• Mining Coal, Cutting Wood</li> <li>• Developing A Village</li> </ul>	<ul style="list-style-type: none"> <li>• Industrial remains</li> <li>• Remains of early settlement</li> </ul>

43

**MINING AIR SHAFTS AND TUNNELS**

Values	Theme	Resource Type / Description
<ul style="list-style-type: none"> <li>• Marks the infrastructure for the transportation of coal to market</li> </ul>	<ul style="list-style-type: none"> <li>• Mining Coal, Cutting Wood</li> </ul>	<ul style="list-style-type: none"> <li>• Industrial remains</li> </ul>

44

**MINE SITE IN BEVAN**

Values	Theme	Resource Type / Description
<ul style="list-style-type: none"> <li>Historical townsite site related to the Number 7 coal mine</li> </ul>	<ul style="list-style-type: none"> <li>Mining Coal, Cutting Wood</li> </ul>	<ul style="list-style-type: none"> <li>Industrial and townsite remains</li> </ul>

45

**GARDENS**

Values	Theme	Resource Type / Description
<ul style="list-style-type: none"> <li>Residential gardens are a major contributor to the character of Cumberland's residential areas</li> </ul>	<ul style="list-style-type: none"> <li>Developing A Village</li> </ul>	<ul style="list-style-type: none"> <li>Urban landscape</li> </ul>

46

**HERITAGE BIKING TRAIL  
(COMOX LAKE ROAD TO No.4 MINE)**

Values	Theme	Resource Type / Description
<ul style="list-style-type: none"> <li>Part of the Wellington Colliery Railway right-of-way</li> <li>Incorporates trestle structure filled with coal slag</li> <li>Marks the development of recreational infrastructure</li> </ul>	<ul style="list-style-type: none"> <li>Quiet Life, Active Pursuits</li> <li>Developing A Village</li> </ul>	<ul style="list-style-type: none"> <li>Recreational trail</li> </ul>

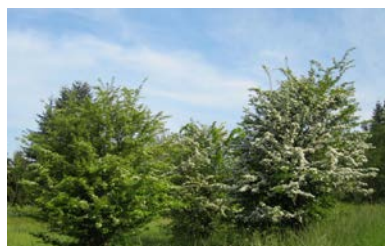
47



### CHERRY TREES (No.1 JAPANESE TOWN)

Values	Theme	Resource Type / Description
<ul style="list-style-type: none"> <li>· Cultural marker of the Japanese Canadian community</li> <li>· Marks the historical settlement of Japanese Canadian community in No.1 Town</li> </ul>	<ul style="list-style-type: none"> <li>· Quiet Life, Active Pursuits</li> <li>· Developing A Village</li> <li>· Creating A Diverse Community</li> </ul>	<ul style="list-style-type: none"> <li>· Historical landscape</li> </ul>

48



### HAWTHORN TREES (CHINATOWN)

Values	Theme	Resource Type / Description
<ul style="list-style-type: none"> <li>· Memorial trees for Ron Bannerman</li> </ul>	<ul style="list-style-type: none"> <li>· Quiet Life, Active Pursuits</li> <li>· Developing A Village</li> <li>·</li> </ul>	<ul style="list-style-type: none"> <li>· Plant specimen</li> </ul>

49



### GRADE CHANGE ON DUNSMUIR AVENUE

Values	Theme	Resource Type / Description
<ul style="list-style-type: none"> <li>· Grades help define distinct zones of use along street (institutional, commercial, residential)</li> <li>· Slope dramatizes the presence of the street</li> </ul>	<ul style="list-style-type: none"> <li>· Developing A Village</li> <li>· Creating A Diverse Community</li> </ul>	<ul style="list-style-type: none"> <li>· Urban landscape</li> </ul>

50

**VILLAGE PARK**

Values	Theme	Resource Type / Description
<ul style="list-style-type: none"> <li>· Marks the management of coal in Cumberland's history</li> <li>· Encompasses all Cumberland recreation (including activities such as baseball, rugby, dog park, skate park)</li> </ul>	<ul style="list-style-type: none"> <li>· Mining Coal, Cutting Wood</li> <li>· Developing A Village</li> </ul>	<ul style="list-style-type: none"> <li>· Industrial remains</li> </ul>

51

**URBAN VISTAS  
(VIEWS FROM COAL VALLEY ESTATES AND UP  
DUNSMUIR AVENUE)**

Values	Theme	Resource Type / Description
<ul style="list-style-type: none"> <li>· Places Cumberland in its natural context</li> <li>· Situates the main street of the village in its physical surroundings</li> </ul>	<ul style="list-style-type: none"> <li>· Quiet Life, Active Pursuits</li> <li>· Developing A Village</li> </ul>	<ul style="list-style-type: none"> <li>· Vistas</li> </ul>

52

**MARYPORT STREETSCAPE**

Values	Theme	Resource Type / Description
<ul style="list-style-type: none"> <li>· Strong landscape that helps define the character of Cumberland</li> <li>· Early residential streetscape</li> </ul>	<ul style="list-style-type: none"> <li>· Developing A Village</li> </ul>	<ul style="list-style-type: none"> <li>· Urban landscape</li> </ul>



53



## LARGE LOTS

Values	Theme	Resource Type / Description
<ul style="list-style-type: none"> <li>Gardened landscape contributes to the green nature of the urban landscape</li> </ul>	<ul style="list-style-type: none"> <li>Developing A Village</li> </ul>	<ul style="list-style-type: none"> <li>Urban landscape</li> </ul>

## Built Environment

54



### DUNSMUIR STREETSCAPE AND BUILDINGS

Values	Theme	Resource Type / Description
<ul style="list-style-type: none"> <li>Dunsmuir streetscape and independent small business culture are major contributors to the character of Cumberland's character</li> </ul>	<ul style="list-style-type: none"> <li>Quiet Life, Active Pursuits</li> <li>Developing A Village</li> </ul>	<ul style="list-style-type: none"> <li>Urban landscape</li> </ul>

55



### COMMERCIAL BUILDINGS ON SIDE STREETS

Values	Theme	Resource Type / Description
<ul style="list-style-type: none"> <li>Independent small business culture is a major contributor to the character of Cumberland's character</li> </ul>	<ul style="list-style-type: none"> <li>Developing A Village</li> </ul>	<ul style="list-style-type: none"> <li>Urban landscape</li> </ul>

54



### VILLAGE CORE OLD HOUSES

Values	Theme	Resource Type / Description
<ul style="list-style-type: none"> <li>Old houses a major contributor to the character of the village</li> <li>Valuable context for Dunsmuir Avenue commercial core</li> </ul>	<ul style="list-style-type: none"> <li>Developing A Village</li> </ul>	<ul style="list-style-type: none"> <li>Historical building in urban landscape</li> </ul>

55



## JAPANESE MINERS' HOMES

Values	Theme	Resource Type / Description
<ul style="list-style-type: none"> <li>No.5 Japanese Town, Maple Street, and No.1 Japanese Town Saito House, remnants of major historic mining community</li> </ul>	<ul style="list-style-type: none"> <li>Developing A Village</li> <li>Mining Coal, Cutting Wood</li> <li>Creating a Diverse Community</li> </ul>	<ul style="list-style-type: none"> <li>Historical building form in urban landscape</li> </ul>

56



## ILO-ILO THEATRE 2691 Dunsmuir Avenue constructed 1914

Values	Theme	Resource Type / Description
<ul style="list-style-type: none"> <li>Landmark on Dunsmuir Avenue</li> <li>Site of historic cultural events</li> </ul>	<ul style="list-style-type: none"> <li>Quiet Life, Active Pursuits</li> <li>Developing A Village</li> </ul>	<ul style="list-style-type: none"> <li>Historical building in urban landscape</li> </ul>

57



## MASONIC HALL

Values	Theme	Resource Type / Description
<ul style="list-style-type: none"> <li>Landmark on Dunsmuir Avenue next the Ilo-Ilo Theatre</li> <li>Now one of the Masonic Lodges in community</li> <li>Remnant of old enduring Cumberland community society</li> </ul>	<ul style="list-style-type: none"> <li>Quiet Life, Active Pursuits</li> <li>Developing A Village</li> </ul>	<ul style="list-style-type: none"> <li>Historical building in urban landscape</li> </ul>

58

**JAPANESE SCHOOL**

Values	Theme	Resource Type / Description
<ul style="list-style-type: none"> <li>Now-demolished reminder of cultural diversity of early Cumberland</li> <li>School taught Japanese culture and language to Japanese Canadian students</li> </ul>	<ul style="list-style-type: none"> <li>Developing A Village</li> <li>Creating a Diverse Community</li> </ul>	<ul style="list-style-type: none"> <li>Historical building in urban landscape</li> </ul>

59

**DRINKING ESTABLISHMENTS**

Values	Theme	Resource Type / Description
<ul style="list-style-type: none"> <li>Enduring social centre for the community</li> </ul>	<ul style="list-style-type: none"> <li>Developing A Village</li> <li>Creating a Diverse Community</li> </ul>	<ul style="list-style-type: none"> <li>Historical building in urban landscape</li> </ul>

60

**ROYAL CANADIAN LEGION AND LEGION ARCH**

Original Legion behind enduring arch

Values	Theme	Resource Type / Description
<ul style="list-style-type: none"> <li>Remnant of early community institution</li> <li>Arch voluntarily designated as a heritage resource</li> </ul>	<ul style="list-style-type: none"> <li>Developing A Village</li> </ul>	<ul style="list-style-type: none"> <li>Historical structure in urban landscape</li> </ul>

61

**NO.1 MINE**

Values	Theme	Resource Type / Description
<ul style="list-style-type: none"> <li>Landscape is a reminder of the origins of Cumberland's economy</li> </ul>	<ul style="list-style-type: none"> <li>Mining Coal, Cutting Wood</li> <li>Developing A Village</li> </ul>	<ul style="list-style-type: none"> <li>Industrial remains</li> </ul>

62

**NO.5 MINE FAN HOUSE**  
**Coal Valley Estates**

Values	Theme	Resource Type / Description
<ul style="list-style-type: none"> <li>Landscape is a reminder of the origins of Cumberland's economy</li> <li>Rare artifact of coal mining</li> </ul>	<ul style="list-style-type: none"> <li>Mining Coal, Cutting Wood</li> <li>Developing A Village</li> </ul>	<ul style="list-style-type: none"> <li>Industrial remains</li> </ul>

63

**SCOTTS SLOPE ORIGINAL PORTAL AND SWITCH ROOM**  
**c. 1930s**

Values	Theme	Resource Type / Description
<ul style="list-style-type: none"> <li>Extension of #4 Mine slope</li> <li>Accessed by narrow gauge railway trestle</li> <li>Landscape is a reminder of the origins of Cumberland's economy</li> <li>Rare artifact of coal mining</li> </ul>	<ul style="list-style-type: none"> <li>Mining Coal, Cutting Wood</li> <li>Developing A Village</li> </ul>	<ul style="list-style-type: none"> <li>Industrial remains</li> </ul>



64



TRENT RIVER TRESTLE

Values	Theme	Resource Type / Description
<ul style="list-style-type: none"> <li>Replacement trestle (not in original location) for recent use by EN Railway</li> <li>Recalls historical rail infrastructure</li> </ul>	<ul style="list-style-type: none"> <li>Mining Coal, Cutting Wood</li> </ul>	<ul style="list-style-type: none"> <li>Industrial infrastructure</li> </ul>

65



ABBAY CHURCH

Values	Theme	Resource Type / Description
<ul style="list-style-type: none"> <li>Community institution as performing arts centre</li> <li>Landmark - was a Catholic Church</li> </ul>	<ul style="list-style-type: none"> <li>Developing A Village</li> <li>Creating a Diverse Community</li> </ul>	<ul style="list-style-type: none"> <li>Historical building in urban landscape</li> </ul>

66



CUMBERLAND UNITED CHURCH

Values	Theme	Resource Type / Description
<ul style="list-style-type: none"> <li>Community institution</li> <li>Landmark</li> </ul>	<ul style="list-style-type: none"> <li>Developing A Village</li> <li>Creating a Diverse Community</li> <li></li> </ul>	<ul style="list-style-type: none"> <li>Historical building in urban landscape</li> </ul>

67

**MAROCCHI BUILDING**

Values	Theme	Resource Type / Description
<ul style="list-style-type: none"> <li>Landmark</li> <li>Associated with the Italian community</li> <li>Recent adaptive re-use with restoration of heritage elements</li> </ul>	<ul style="list-style-type: none"> <li>Developing A Village</li> <li>Creating a Diverse Community</li> </ul>	<ul style="list-style-type: none"> <li>Historical building in urban landscape</li> </ul>

68

**KING GEORGE HOTEL**

Values	Theme	Resource Type / Description
<ul style="list-style-type: none"> <li>Landmark</li> </ul>	<ul style="list-style-type: none"> <li>Developing A Village</li> </ul>	<ul style="list-style-type: none"> <li>Historical building in urban landscape</li> </ul>

69

**ROYSTON LUMBER CO. SAWMILL SITE**

Values	Theme	Resource Type / Description
<ul style="list-style-type: none"> <li>Reminder of the roots of Cumberland's economy being partly in the production of lumber</li> <li>History of belonging to Japanese consortium</li> <li>Once site of Walker's Scrap Metal</li> <li>At present with Japanese temple building</li> </ul>	<ul style="list-style-type: none"> <li>Mining Coal, Cutting Wood</li> <li>Developing A Village</li> <li>Creating a Diverse Community</li> </ul>	<ul style="list-style-type: none"> <li>Industrial remnants</li> </ul>

70



c. 1960s HOUSES

Values	Theme	Resource Type / Description
<ul style="list-style-type: none"> <li>Record of postwar Village expansion</li> </ul>	<ul style="list-style-type: none"> <li>Developing A Village</li> </ul>	<ul style="list-style-type: none"> <li>Urban landscape</li> </ul>

71



LIQUOR STORE

Values	Theme	Resource Type / Description
<ul style="list-style-type: none"> <li>Front facade brick facing from Union Bay coke ovens</li> </ul>	<ul style="list-style-type: none"> <li>Developing A Village</li> </ul>	<ul style="list-style-type: none"> <li>Historical building material</li> </ul>

72

WAVERLEY HOTEL



	Theme	Resource Type / Description
<ul style="list-style-type: none"> <li>Part of collection of early buildings on Dunsmuir Avenue that establish Cumberland's unique character</li> <li>Community gathering place</li> </ul>	<ul style="list-style-type: none"> <li>Developing A Village</li> </ul>	<ul style="list-style-type: none"> <li>Historical building in urban landscape</li> </ul>

73

**JAPANESE TEMPLE**

Values	Theme	Resource Type / Description
<ul style="list-style-type: none"> <li>Historical evidence of early Japanese Canadian presence in Cumberland</li> </ul>	<ul style="list-style-type: none"> <li>Developing A Village</li> <li>Creating a Diverse Community</li> </ul>	<ul style="list-style-type: none"> <li>Historical building in urban landscape</li> </ul>

74

**OLD SCHOOL**

Values	Theme	Resource Type / Description
<ul style="list-style-type: none"> <li>Historic Beaufort Avenue site</li> <li>Site of early substantial community institution</li> </ul>	<ul style="list-style-type: none"> <li>Developing A Village</li> </ul>	<ul style="list-style-type: none"> <li>Historical building in urban landscape</li> </ul>

75

**BICKLE HOUSE  
2750 DUNSMUIR AVENUE**

Values	Theme	Resource Type / Description
<ul style="list-style-type: none"> <li>Landmark</li> <li>Example of early residential development of consequence</li> </ul>	<ul style="list-style-type: none"> <li>Developing A Village</li> </ul>	<ul style="list-style-type: none"> <li>Historical house in urban landscape</li> </ul>

76

**BRIDES' HOUSES**

Values	Theme	Resource Type / Description
<ul style="list-style-type: none"> <li>Unique starter homes in old Cumberland neighbourhoods, usually at back of properties</li> <li>Contributor to unique character of older neighbourhoods</li> <li>Valuable cultural history</li> </ul>	<ul style="list-style-type: none"> <li>Developing A Village</li> </ul>	<ul style="list-style-type: none"> <li>Historical building form in urban landscape</li> </ul>

77

**BEVAN HOMES**

Values	Theme	Resource Type / Description
<ul style="list-style-type: none"> <li>Unique for story of relocation (by rail) of houses from Bevan to Cumberland as economy of region shifted</li> </ul>	<ul style="list-style-type: none"> <li>Developing A Village</li> </ul>	<ul style="list-style-type: none"> <li>Historical buildings in urban landscape</li> </ul>

78

**SAITO HOUSE**

Values	Theme	Resource Type / Description
<ul style="list-style-type: none"> <li>Rare surviving home from the historical Japanese Canadian settlement at No.1 Japanese Town in Cumberland</li> <li>Excellent example of the typical residential design</li> <li>Unique tenure (house without property) related to land ownership practices by forestry companies</li> </ul>	<ul style="list-style-type: none"> <li>Developing A Village</li> <li>Creating a Diverse Community</li> </ul>	<ul style="list-style-type: none"> <li>Historical building in now-rural landscape</li> </ul>



79



THE BIG STORE

Values	Theme	Resource Type / Description
<ul style="list-style-type: none"> <li>Landmark</li> <li>Major contributor to the character of Cumberland's Dunsmuir Avenue</li> </ul>	<ul style="list-style-type: none"> <li>Developing A Village</li> </ul>	<ul style="list-style-type: none"> <li>Historical building in urban landscape</li> </ul>

80



MUNICIPAL HALL

Values	Theme	Resource Type / Description
<ul style="list-style-type: none"> <li>Presence of Village of Cumberland government on central village street</li> <li>Historical government site</li> </ul>	<ul style="list-style-type: none"> <li>Developing A Village</li> <li>Governing Change</li> </ul>	<ul style="list-style-type: none"> <li>Urban landscape</li> </ul>

81



TARBELL'S

Values	Theme	Resource Type / Description
<ul style="list-style-type: none"> <li>Landmark</li> <li>Contributor to the character of Cumberland's Dunsmuir Avenue</li> <li>Contemporary commercial vitality</li> </ul>	<ul style="list-style-type: none"> <li>Developing A Village</li> </ul>	<ul style="list-style-type: none"> <li>Historical building in urban landscape</li> </ul>

82

**MINING CART BENCHES**

Values	Theme	Resource Type / Description
<ul style="list-style-type: none"> <li>Presence of historical mining artifacts unique to Cumberland</li> </ul>	<ul style="list-style-type: none"> <li>Developing A Village</li> </ul>	<ul style="list-style-type: none"> <li>Urban landscape feature</li> </ul>

83

**COMMUNITY SCHOOL**

Values	Theme	Resource Type / Description
<ul style="list-style-type: none"> <li>Community institution</li> </ul>	<ul style="list-style-type: none"> <li>Developing A Village</li> </ul>	<ul style="list-style-type: none"> <li>Community institution in urban landscape</li> </ul>

84

**CUMBERLAND RECREATION CENTRE AND BIG GYM**

Values	Theme	Resource Type / Description
<ul style="list-style-type: none"> <li>Landmark</li> <li>Historic place of community activities</li> </ul>	<ul style="list-style-type: none"> <li>Developing A Village</li> </ul>	<ul style="list-style-type: none"> <li>Historical building in urban landscape</li> </ul>

85

**CHARACTER BUILDINGS**

Values	Theme	Resource Type / Description
<ul style="list-style-type: none"> <li>Old buildings of character along Dunsmuir are a major contributor to the character of Cumberland</li> </ul>	<ul style="list-style-type: none"> <li>Developing A Village</li> </ul>	<ul style="list-style-type: none"> <li>Historical buildings in urban landscape</li> </ul>

86

**RIDING FOOL HOSTEL**

Values	Theme	Resource Type / Description
<ul style="list-style-type: none"> <li>Landmark</li> <li>Adaptive re-use to serve today's economic opportunities</li> </ul>	<ul style="list-style-type: none"> <li>Developing A Village</li> <li>Quiet Life, Active Pursuits</li> </ul>	<ul style="list-style-type: none"> <li>Historical building in urban landscape</li> </ul>

87

**OLD ROYAL BANK**

Values	Theme	Resource Type / Description
<ul style="list-style-type: none"> <li>Enduring landmark</li> <li>Adaptive re-use</li> </ul>	<ul style="list-style-type: none"> <li>Developing A Village</li> </ul>	<ul style="list-style-type: none"> <li>Historical building in urban landscape</li> </ul>

88

**DUNSMUIR STREETScape AND BUILDINGS**

Values	Theme	Resource Type / Description
<ul style="list-style-type: none"> <li>Streetscape is a major contributor to the character of Cumberland</li> </ul>	<ul style="list-style-type: none"> <li>Developing A Village</li> </ul>	<ul style="list-style-type: none"> <li>Urban landscape</li> </ul>

89

**OLD POST OFFICE**

Values	Theme	Resource Type / Description
<ul style="list-style-type: none"> <li>Landmark</li> <li>Adaptive re-use to suit changing economy of Cumberland</li> </ul>	<ul style="list-style-type: none"> <li>Developing A Village</li> </ul>	<ul style="list-style-type: none"> <li>Historical building in urban landscape</li> </ul>

90

**WILLARD BLOCK**

Values	Theme	Resource Type / Description
<ul style="list-style-type: none"> <li>Demolished landmark (now site of Rider's Pizza)</li> <li>Once location of studio of important local photographer Taki Matsubuchi</li> </ul>	<ul style="list-style-type: none"> <li>Developing A Village</li> <li>Creating a Diverse Community</li> </ul>	<ul style="list-style-type: none"> <li>Historical building in urban landscape</li> </ul>

91



## HOMES OF THE PIONEER WORKING CLASS (CAMP ROAD)

Values	Theme	Resource Type / Description
<ul style="list-style-type: none"> <li>Connects present to past history of Cumberland, and the residential life of workers in the early village</li> <li>Early residential neighbourhood with unique character</li> </ul>	<ul style="list-style-type: none"> <li>Developing A Village</li> </ul>	<ul style="list-style-type: none"> <li>Historical buildings in urban landscape</li> </ul>

92



## JUMBO'S CABIN

Values	Theme	Resource Type / Description
<ul style="list-style-type: none"> <li>Last remaining structure from Chinatown</li> <li>Once also functioned as jail</li> </ul>	<ul style="list-style-type: none"> <li>Developing A Village</li> <li>Creating a Diverse Community</li> </ul>	<ul style="list-style-type: none"> <li>Historical building in rural landscape</li> </ul>

93, 94 deleted

## Areas, Districts and Communities

95



**UNION TOWNSITE  
1889**

Values	Theme	Resource Type / Description
<ul style="list-style-type: none"> <li>Original settlement, associated with the earliest coal mines in the Cumberland area</li> <li>Union (est. 1889) and Cumberland (est. 1893) were</li> </ul>	<ul style="list-style-type: none"> <li>Developing A Village</li> </ul>	<ul style="list-style-type: none"> <li>Urban landscape</li> </ul>

96



**CHINATOWN**

Values	Theme	Resource Type / Description
<ul style="list-style-type: none"> <li>Reminder of the presence of sizable Chinese population in early Cumberland</li> <li>Recorder of the segregation and connections between ethnic populations</li> </ul>	<ul style="list-style-type: none"> <li>Developing A Village</li> <li>Creating a Diverse Community</li> </ul>	<ul style="list-style-type: none"> <li>Urban landscape</li> </ul>

97



**No.1 JAPANESE TOWN  
COAL CREEK PARK**

Values	Theme	Resource Type / Description
<ul style="list-style-type: none"> <li>Reminder of the presence of sizable Japanese Canadian population in early Cumberland</li> <li>Recorder of the segregation and connections between ethnic populations</li> </ul>	<ul style="list-style-type: none"> <li>Developing A Village</li> <li>Creating a Diverse Community</li> </ul>	<ul style="list-style-type: none"> <li>Urban landscape</li> </ul>



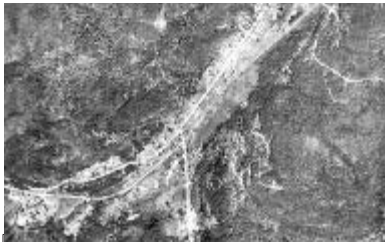
98



## BLACK COMMUNITY AND OLD HOUSE SITES

Values	Theme	Resource Type / Description
<ul style="list-style-type: none"> <li>Reminder of the presence of sizable Black population in early Cumberland</li> <li>Recorder of the segregation and connections between ethnic populations</li> </ul>	<ul style="list-style-type: none"> <li>Developing A Village</li> <li>Creating a Diverse Community</li> </ul>	<ul style="list-style-type: none"> <li>Urban landscape</li> </ul>

99



## ITALIAN AND EASTERN EUROPEAN NEIGHBOURHOODS (UNION CAMP)

Values	Theme	Resource Type / Description
<ul style="list-style-type: none"> <li>Marks settlement of Italians at Union Camp.</li> <li>Recorder of the hierarchy of settlements between historic ethnic populations</li> </ul>	<ul style="list-style-type: none"> <li>Developing A Village</li> <li>Creating a Diverse Community</li> </ul>	<ul style="list-style-type: none"> <li>Urban landscape</li> </ul>

100



## MAPLE TOWNSITE No.5 JAPANESE TOWN

Values	Theme	Resource Type / Description
<ul style="list-style-type: none"> <li>Valuable to the history of beginning of newcomer settlements in the Cumberland area</li> </ul>	<ul style="list-style-type: none"> <li>Developing A Village</li> </ul>	<ul style="list-style-type: none"> <li>Urban landscape</li> </ul>

101



### CAMP ROAD STREETSCAPE, HOUSES AND PROPERTIES

Values	Theme	Resource Type / Description
<ul style="list-style-type: none"> <li>Unique relationship between street and houses</li> <li>Repetitive house form</li> <li>Location bridging between Dunsmuir Avenue and original mining sites and miner neighbourhoods</li> </ul>	<ul style="list-style-type: none"> <li>Developing A Village</li> </ul>	<ul style="list-style-type: none"> <li>Historical urban landscape</li> </ul>

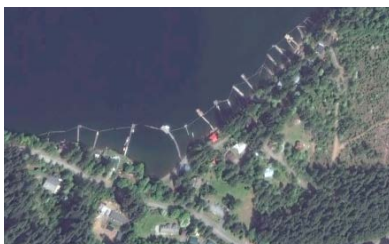
102



### UNIQUE STREET PATTERNS OF EGREMONT SUBDIVISION c. 1980s

Values	Theme	Resource Type / Description
<ul style="list-style-type: none"> <li>Unique to Cumberland</li> <li>Displays recent development of the community</li> </ul>	<ul style="list-style-type: none"> <li>Developing A Village</li> </ul>	<ul style="list-style-type: none"> <li>Urban landscape</li> </ul>

103



### COTTAGE COMMUNITY, COMOX LAKE

Values	Theme	Resource Type / Description
<ul style="list-style-type: none"> <li>Historic recreational landscape</li> </ul>	<ul style="list-style-type: none"> <li>Quiet Life, Active Pursuits</li> </ul>	<ul style="list-style-type: none"> <li>Historical recreational landscape</li> </ul>

104



### UNION BAY



Values	Theme	Resource Type / Description
<ul style="list-style-type: none"> <li>Provides historical context for Cumberland, and its industrial history</li> <li>Name ties bay with coal mines of Union</li> <li>The port for shipment of Union coal</li> </ul>	<ul style="list-style-type: none"> <li>Mining Coal, Cutting Wood</li> <li>Developing A Village</li> </ul>	<ul style="list-style-type: none"> <li>Associated landscape</li> </ul>

105



### LITTLE JERUSALEM (DERWENT AVENUE)

Values	Theme	Resource Type / Description
<ul style="list-style-type: none"> <li>Example of early residential development</li> <li>Example of culturally diverse population (Jewish citizen engaging in land development)</li> </ul>	<ul style="list-style-type: none"> <li>Developing A Village</li> <li>Creating a Diverse Community</li> </ul>	<ul style="list-style-type: none"> <li>Urban landscape</li> </ul>

106



### THE HEIGHTS

Values	Theme	Resource Type / Description
<ul style="list-style-type: none"> <li>Area of town valued for views over the Comox Valley</li> </ul>	<ul style="list-style-type: none"> <li>Developing A Village</li> </ul>	<ul style="list-style-type: none"> <li>Urban landscape</li> </ul>

107

**VILLAGE SQUARE**

Values	Theme	Resource Type / Description
<ul style="list-style-type: none"> <li>Public space at the heart of the commercial portion of Dunsmuir Avenue</li> <li>Old gas station property repurposed for park and gathering place</li> </ul>	<ul style="list-style-type: none"> <li>Developing A Village</li> <li>Quiet Life, Active Pursuits</li> </ul>	<ul style="list-style-type: none"> <li>Urban landscape</li> </ul>

108

**JAPANESE HILL SITE**

Values	Theme	Resource Type / Description
<ul style="list-style-type: none"> <li>Historic pattern of settlement</li> </ul>	<ul style="list-style-type: none"> <li>Developing A Village</li> <li>Creating a Diverse Community</li> </ul>	<ul style="list-style-type: none"> <li>Urban landscape</li> </ul>

109

**OLD GOVERNMENT PRECINCT WITH HOSPITAL**

Values	Theme	Resource Type / Description
<ul style="list-style-type: none"> <li>Continued use of the site for hospital use since laying out of townsite</li> </ul>	<ul style="list-style-type: none"> <li>Developing A Village</li> </ul>	<ul style="list-style-type: none"> <li>Institutional landscape</li> </ul>

110



## AREAS WITH RURAL CHARACTER

Values	Theme	Resource Type / Description
<ul style="list-style-type: none"> <li>Important for Cumberland's residents sense of quiet life</li> </ul>	<ul style="list-style-type: none"> <li>Quiet Life, Active Pursuits</li> <li>Developing A Village</li> </ul>	<ul style="list-style-type: none"> <li>Rural landscape</li> </ul>

111



## VLA DEVELOPMENTS ON PENWITH AND MARYPORT STREETS post First World War

Values	Theme	Resource Type / Description
<ul style="list-style-type: none"> <li>Part of history of residential development in the old residential neighbourhoods</li> </ul>	<ul style="list-style-type: none"> <li>Developing A Village</li> </ul>	<ul style="list-style-type: none"> <li>Urban landscape</li> </ul>

112



## BEVAN (OUTSIDE CUMBERLAND)

Values	Theme	Resource Type / Description
<ul style="list-style-type: none"> <li>Important remnant of the history of settlement of the Cumberland region</li> <li>Historic connection with Cumberland miners working in No.7 and No.8 Mines in Bevan</li> <li>Many Bevan houses relocated to old neighbourhoods of Cumberland</li> </ul>	<ul style="list-style-type: none"> <li>Mining Coal, Cutting Wood</li> <li>Developing A Village</li> </ul>	<ul style="list-style-type: none"> <li>Associated landscape</li> </ul>

113



ROYSTON

Values	Theme	Resource Type / Description
<ul style="list-style-type: none"> <li>· Important remnant of the history of settlement of the Cumberland region</li> <li>· Important association with the Japanese Canadian community in the Cumberland region</li> <li>· Cumberland's connection with the sea</li> </ul>	<ul style="list-style-type: none"> <li>· Mining Coal, Cutting Wood</li> <li>· Creating a Diverse Community</li> </ul>	<ul style="list-style-type: none"> <li>· Associated landscape</li> </ul>



## Artifacts

115



### STEAM DONKEYS, CABLES, BRIDGE FOOTINGS

Values	Theme	Resource Type / Description
<ul style="list-style-type: none"> <li>Unique remnants of the mining and logging economy</li> </ul>	<ul style="list-style-type: none"> <li>Mining Coal, Cutting Wood</li> </ul>	<ul style="list-style-type: none"> <li>Industrial artifacts</li> </ul>

116



### COAL MINING ARTIFACTS: SLAG PILES, RAILWAY TRACKS

Values	Theme	Resource Type / Description
<ul style="list-style-type: none"> <li>Unique remnants of the mining and logging economy</li> </ul>	<ul style="list-style-type: none"> <li>Mining Coal, Cutting Wood</li> </ul>	<ul style="list-style-type: none"> <li>Industrial artifacts</li> </ul>

117



### WATERWORKS

Values	Theme	Resource Type / Description
<ul style="list-style-type: none"> <li>Important as example of early industrial and settlement infrastructure</li> </ul>	<ul style="list-style-type: none"> <li>Mining Coal, Cutting Wood</li> <li>Developing A Village</li> </ul>	<ul style="list-style-type: none"> <li>Industrial Infrastructure</li> </ul>

118



## INTERPRETIVE SIGNS IN CHINATOWN

Values	Theme	Resource Type / Description
<ul style="list-style-type: none"> <li>Landscape is a major contributor to the character of Cumberland's residential areas</li> </ul>	<ul style="list-style-type: none"> <li>Creating a Diverse Community</li> </ul>	<ul style="list-style-type: none"> <li>Urban landscape</li> </ul>

119



## CAIRNS: JAPANESE CANADIAN, BLACK AND CHINESE COMMUNITIES, and NO.4 MINE CAIRN

Values	Theme	Resource Type / Description
<ul style="list-style-type: none"> <li>Landscape is a major contributor to the character of Cumberland's residential areas</li> </ul>	<ul style="list-style-type: none"> <li>Creating a Diverse Community</li> </ul>	<ul style="list-style-type: none"> <li>Urban landscape</li> </ul>

120



## SANDWICH BOARDS

Values	Theme	Resource Type / Description
<ul style="list-style-type: none"> <li>Valued for being a sign of small independent commercial life on Dunsmuir Avenue</li> </ul>	<ul style="list-style-type: none"> <li>Quiet Life, Active Pursuits</li> <li>Developing A Village</li> </ul>	<ul style="list-style-type: none"> <li>Urban landscape</li> </ul>

121



## ELECTRIC LIGHT COMPANY STRUCTURES

Values	Theme	Resource Type / Description
<ul style="list-style-type: none"> <li>Part of settlement infrastructure</li> </ul>	<ul style="list-style-type: none"> <li>Developing A Village</li> </ul>	<ul style="list-style-type: none"> <li>Urban landscape structure</li> </ul>

122



## ORIGINAL ROLLING STOCK

Values	Theme	Resource Type / Description
<ul style="list-style-type: none"> <li>Rare remaining engines exist outside of the region in the Snoqualmie Railway Museum</li> <li>Important artifacts that recall the railroad and industrial history of Cumberland</li> </ul>	<ul style="list-style-type: none"> <li>Mining Coal, Cutting Wood</li> </ul>	<ul style="list-style-type: none"> <li>Railway artifacts</li> </ul>

## Rituals, Events, Intangibles

122



### MOUNTAIN BIKE RACES

Values	Theme	Resource Type / Description
<ul style="list-style-type: none"> <li>Important as a community recreational pursuit</li> <li>Engine of contemporary economy</li> <li>Adaptive re-use of logging and mining roads</li> </ul>	<ul style="list-style-type: none"> <li>Quiet Life, Active Pursuits</li> </ul>	<ul style="list-style-type: none"> <li>Community Activity</li> </ul>

123



### PARADES AND PAGEANTS

Values	Theme	Resource Type / Description
<ul style="list-style-type: none"> <li>Long history of Empire Days</li> <li>One of the oldest May Day parades in Canada</li> <li>Remembrance of community festivals and event that communicated community identity and pride</li> </ul>	<ul style="list-style-type: none"> <li>Quiet Life, Active Pursuits</li> <li>Creating a Diverse Community</li> </ul>	<ul style="list-style-type: none"> <li>Community Activity</li> </ul>

124



### WASHOE AND HORSESHOES TOURNAMENT

Values	Theme	Resource Type / Description
<ul style="list-style-type: none"> <li>Recent, enduring community event that underscores local community pride</li> </ul>	<ul style="list-style-type: none"> <li>Quiet Life, Active Pursuits</li> </ul>	<ul style="list-style-type: none"> <li>Community Activity</li> </ul>

125

**WORKERS' DAY BEAN SUPPER**

Values	Theme	Resource Type / Description
<ul style="list-style-type: none"> <li>Recent tradition that underscores local community pride in the worker history of Cumberland</li> </ul>	<ul style="list-style-type: none"> <li>Quiet Life, Active Pursuits</li> </ul>	<ul style="list-style-type: none"> <li>Community Activity</li> </ul>

126

**FIREFIGHTERS**

Values	Theme	Resource Type / Description
<ul style="list-style-type: none"> <li>Community pride</li> <li>Historical importance given to local volunteerism</li> </ul>	<ul style="list-style-type: none"> <li>Governing Change</li> </ul>	<ul style="list-style-type: none"> <li>Community service</li> </ul>

127

**EASTER EGG HUNT  
(No.6 MINE PARK)**

Values	Theme	Resource Type / Description
<ul style="list-style-type: none"> <li>Enduring community event that underscores local community connections and pride</li> </ul>	<ul style="list-style-type: none"> <li>Quiet Life, Active Pursuits</li> </ul>	<ul style="list-style-type: none"> <li>Community Activity</li> </ul>

128



## OLDTIMERS SOCCER GAME

Values	Theme	Resource Type / Description
<ul style="list-style-type: none"> <li>Enduring community event that underscores local community connections and pride</li> <li>Cumberland team important part of recreational life for miners</li> <li>Team was a prominent on the Vancouver Island circuit</li> </ul>	<ul style="list-style-type: none"> <li>Quiet Life, Active Pursuits</li> </ul>	<ul style="list-style-type: none"> <li>Community Activity</li> </ul>

130



## FESTIVALS

Values	Theme	Resource Type / Description
<ul style="list-style-type: none"> <li>Valued for the ongoing renewal of local interest and community connections</li> </ul>	<ul style="list-style-type: none"> <li>Quiet Life, Active Pursuits</li> </ul>	<ul style="list-style-type: none"> <li>Community Activity</li> </ul>

131



1) ATMOSPHERE GATHERING:

## RETURN OF LIVE THEATRE

Values	Theme	Resource Type / Description
<ul style="list-style-type: none"> <li>Valued for the renewal of local interest, community connections and artists</li> <li>Part of regional connection with Courtney</li> </ul>	<ul style="list-style-type: none"> <li>Developing A Village</li> </ul>	<ul style="list-style-type: none"> <li>Urban landscape</li> </ul>



132



## CUMBERLAND LAKE DAYS

Values	Theme	Resource Type / Description
<ul style="list-style-type: none"> <li>Valued for the ongoing community recreational life</li> </ul>	<ul style="list-style-type: none"> <li>Developing A Village</li> </ul>	<ul style="list-style-type: none"> <li>Urban landscape</li> </ul>

134



## HERITAGE FAIRE

Values	Theme	Resource Type / Description
<ul style="list-style-type: none"> <li>Valued for the renewal of community craftsmen and artists</li> </ul>	<ul style="list-style-type: none"> <li>Developing A Village</li> </ul>	<ul style="list-style-type: none"> <li>Urban landscape</li> </ul>

135



## LUCKY LAGER

Values	Theme	Resource Type / Description
<ul style="list-style-type: none"> <li>Local pride in community social pattern</li> <li>Associated with pride of Cumberland at one time being the highest per capita consumers of Lucky Lager beer</li> </ul>	<ul style="list-style-type: none"> <li>Quiet Life, Active Pursuits</li> </ul>	<ul style="list-style-type: none"> <li>Community Activity</li> </ul>

136

**BOAT TRAFFIC ON COMOX LAKE**

Values	Theme	Resource Type / Description
<ul style="list-style-type: none"> <li>Important example of enduring on community recreational life</li> </ul>	<ul style="list-style-type: none"> <li>Quiet Life, Active Pursuits</li> </ul>	<ul style="list-style-type: none"> <li>Recreational Activity</li> </ul>

137

**MINERS' MEMORIAL WEEKEND**

Values	Theme	Resource Type / Description
<ul style="list-style-type: none"> <li>Honouring the mining history of Cumberland, and miners' stories</li> </ul>	<ul style="list-style-type: none"> <li>Quiet Life, Active Pursuits</li> </ul>	<ul style="list-style-type: none"> <li>Community Activity</li> </ul>

138

**VALENTINE'S DAY**

Values	Theme	Resource Type / Description
<ul style="list-style-type: none"> <li>Enduring special day in the community</li> </ul>	<ul style="list-style-type: none"> <li>Quiet Life, Active Pursuits</li> </ul>	<ul style="list-style-type: none"> <li>Community Activity</li> </ul>

139



## TRIVIA NIGHT

Values	Theme	Resource Type / Description
<ul style="list-style-type: none"> <li>Enduring social event in the community, used as a fundraiser for the Community Forest</li> </ul>	<ul style="list-style-type: none"> <li>Quiet Life, Active Pursuits</li> </ul>	<ul style="list-style-type: none"> <li>Community Activity</li> </ul>

140



## CULTURAL TRADITIONS

Values	Theme	Resource Type / Description
<ul style="list-style-type: none"> <li>Pride in the local culture</li> <li>Contributes to unique identity of Cumberland</li> </ul>	<ul style="list-style-type: none"> <li>Quiet Life, Active Pursuits</li> </ul>	<ul style="list-style-type: none"> <li>Community Activities</li> </ul>

141



## FALL FAIR, HOME AND GARDEN SHOW

Values	Theme	Resource Type / Description
<ul style="list-style-type: none"> <li>Pride in the local culture</li> <li>Contributes to unique identity of Cumberland</li> <li>Connection to fundraising for locally important causes</li> </ul>	<ul style="list-style-type: none"> <li>Quiet Life, Active Pursuits</li> </ul>	<ul style="list-style-type: none"> <li>Community Activity</li> </ul>

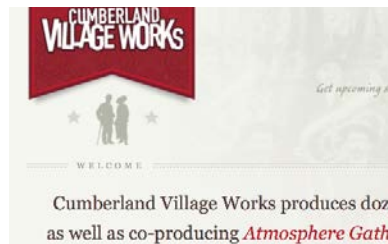
142



## PLACE NAMES FROM ENGLAND'S LAKE DISTRICT

Values	Theme	Resource Type / Description
<ul style="list-style-type: none"> <li>Displays newcomers' ethnic roots</li> <li>Mark historical uses (e.g. Camp Road)</li> </ul>	<ul style="list-style-type: none"> <li>Developing A Village</li> </ul>	<ul style="list-style-type: none"> <li>Urban landscape</li> </ul>

143



## CUMBERLAND VILLAGE WORKS

Values	Theme	Resource Type / Description
<ul style="list-style-type: none"> <li>Community initiative</li> </ul>	<ul style="list-style-type: none"> <li>Developing A Village</li> <li>Governing Change</li> </ul>	<ul style="list-style-type: none"> <li>Urban landscape</li> </ul>

144



## CUMBERLAND CULTURE AND ARTS SOCIETY

Values	Theme	Resource Type / Description
<ul style="list-style-type: none"> <li>Valued as ongoing local interest in the local cultural and artistic community</li> </ul>	<ul style="list-style-type: none"> <li>Quiet Life, Active Pursuits</li> </ul>	<ul style="list-style-type: none"> <li>Community Activities</li> </ul>

145



## WAVERLY HOTEL SHOWS

Values	Theme	Resource Type / Description
<ul style="list-style-type: none"> <li>Valued as ongoing local interest in the local cultural and artistic community</li> </ul>	<ul style="list-style-type: none"> <li>Quiet Life, Active Pursuits</li> </ul>	<ul style="list-style-type: none"> <li>Community Activity</li> </ul>

146



## HALLOWE'EN, SANTA'S BREAKFAST, THUNDERBALLS, BINGO

Values	Theme	Resource Type / Description
<ul style="list-style-type: none"> <li>Enduring special days and events in the community calendar</li> </ul>	<ul style="list-style-type: none"> <li>Quiet Life, Active Pursuits</li> </ul>	<ul style="list-style-type: none"> <li>Community Activity</li> </ul>

147



## BEAUTIFULLY AGING MATERIAL

Values	Theme	Resource Type / Description
<ul style="list-style-type: none"> <li>Important sign of the age of community development</li> <li>Physical beauty of weathered traditional building material and naturalized landscapes</li> </ul>	<ul style="list-style-type: none"> <li>Quiet Life, Active Pursuits</li> <li>Developing A Village</li> </ul>	<ul style="list-style-type: none"> <li>Urban landscape</li> </ul>

148



## CASUAL WALKING DOWN THE MIDDLE OF THE STREET

Values	Theme	Resource Type / Description
<ul style="list-style-type: none"> <li>Value of slow pace of life in the quiet town</li> <li>More possible decades ago, before increase in vehicle traffic</li> </ul>	<ul style="list-style-type: none"> <li>Quiet Life, Active Pursuits</li> <li>Developing A Village</li> </ul>	<ul style="list-style-type: none"> <li>Urban landscape</li> </ul>



## Art, Craft and Heritage

149



### MURALS AND GRAFFITI

Values	Theme	Resource Type / Description
<ul style="list-style-type: none"> <li>Remembrance of historical advertising and messaging on building elevations</li> </ul>	<ul style="list-style-type: none"> <li>Developing A Village</li> </ul>	<ul style="list-style-type: none"> <li>Urban landscape</li> </ul>

150



### CUMBERLAND MUSEUM

Values	Theme	Resource Type / Description
<ul style="list-style-type: none"> <li>Repository of valued artifacts of Cumberland</li> </ul>	<ul style="list-style-type: none"> <li>Developing A Village</li> </ul>	<ul style="list-style-type: none"> <li>Repository for historical artifacts</li> </ul>

151



### PEOPLES' STORIES – JAPANESE AND CHINESE COMMUNITIES

Values	Theme	Resource Type / Description
<ul style="list-style-type: none"> <li>Important record of the ethnically diverse early Cumberland society, and the challenges facing these communities in early newcomer culture</li> </ul>	<ul style="list-style-type: none"> <li>Developing A Village</li> <li>Creating a Diverse Community</li> </ul>	<ul style="list-style-type: none"> <li>Recorded History</li> </ul>

152

**ARTISTIC ENDEAVORS**

Values	Theme	Resource Type / Description
<ul style="list-style-type: none"> <li>Valued aspect of local culture and community</li> </ul>	<ul style="list-style-type: none"> <li>Quiet Life, Active Pursuits</li> <li>Creating a Diverse Community</li> </ul>	<ul style="list-style-type: none"> <li>Cultural activities</li> </ul>

153

**STORIES OF RECREATION AND GREAT ATHLETES**

Values	Theme	Resource Type / Description
<ul style="list-style-type: none"> <li>Part of community pride</li> </ul>	<ul style="list-style-type: none"> <li>Quiet Life, Active Pursuits</li> <li>Creating a Diverse Community</li> </ul>	<ul style="list-style-type: none"> <li>Recorded History</li> </ul>

154

**RE-WILDING PLACES  
(e.g. CHINATOWN)**

Values	Theme	Resource Type / Description
<ul style="list-style-type: none"> <li>Part of the unique contemporary community culture of Cumberland</li> <li>Integrating contemporary and historical connections with the landscape</li> <li>Example: Chinatown was built on a beaver swamp; beaver swamp returning</li> </ul>	<ul style="list-style-type: none"> <li>Land of Plenty</li> <li>Quiet Life, Active Pursuits</li> <li>Developing A Village</li> </ul>	<ul style="list-style-type: none"> <li>Urban landscape</li> </ul>

155



## TRADITIONAL ARTS AND CULTURE

Values	Theme	Resource Type / Description
<ul style="list-style-type: none"> <li>Landscape is a major contributor to the character of Cumberland's residential areas</li> </ul>	<ul style="list-style-type: none"> <li>Quiet Life, Active Pursuits</li> <li>Creating a Diverse Community</li> </ul>	<ul style="list-style-type: none"> <li>Cultural activities</li> </ul>

156



## HISTORICAL PHOTOGRAPHS OF PAST EVENTS

Values	Theme	Resource Type / Description
<ul style="list-style-type: none"> <li>Important connection to past events that have shaped the contemporary town and community</li> </ul>	<ul style="list-style-type: none"> <li>Quiet Life, Active Pursuits</li> <li>Creating a Diverse Community</li> </ul>	<ul style="list-style-type: none"> <li>Recorded history</li> </ul>

157



## STREET PENNANTS

Values	Theme	Resource Type / Description
<ul style="list-style-type: none"> <li>Traditional part of reinforcing Dunsmuir Avenue as the physical central space of the community</li> </ul>	<ul style="list-style-type: none"> <li>Quiet Life, Active Pursuits</li> <li>Developing A Village</li> </ul>	<ul style="list-style-type: none"> <li>Historical urban landscape feature</li> </ul>



## FICTION AND NON-FICTION BOOKS

Values	Theme	Resource Type / Description
<ul style="list-style-type: none"><li>· Culturally significant artifacts reinforcing story of the community</li></ul>	<ul style="list-style-type: none"><li>· Creating a Diverse Community</li></ul>	<ul style="list-style-type: none"><li>· Cultural history artifacts</li></ul>

## People

159



### GINGER GOODWIN, AND THE BEGINNING OF THE LABOUR MOVEMENT

Values	Theme	Resource Type / Description
<ul style="list-style-type: none"> <li>Part of the pride in the mining history</li> <li>Pride in the history of fighting for miners' rights</li> </ul>	<ul style="list-style-type: none"> <li>Creating a Diverse Community</li> </ul>	<ul style="list-style-type: none"> <li>Historical figure</li> </ul>

160



### JOE NAYLOR

Values	Theme	Resource Type / Description
<ul style="list-style-type: none"> <li>Pride in the mining history</li> <li>Pride in the history of fighting for miners' rights</li> </ul>	<ul style="list-style-type: none"> <li>Creating a Diverse Community</li> </ul>	<ul style="list-style-type: none"> <li>Historical figure</li> </ul>

161



### PIONEER FAMILIES

Values	Theme	Resource Type / Description
<ul style="list-style-type: none"> <li>Locally prominent families with a history reaching back to the original pioneer settlement of the area</li> </ul>	<ul style="list-style-type: none"> <li>Creating a Diverse Community</li> </ul>	<ul style="list-style-type: none"> <li>Historical figures</li> </ul>

162

**TREE PLANTING COMMUNITY**

Values	Theme	Resource Type / Description
<ul style="list-style-type: none"> <li>Pride in the contribution to the post-1970s Cumberland culture of Cumberland</li> </ul>	<ul style="list-style-type: none"> <li>Mining Coal, Cutting Wood</li> <li>Creating a Diverse Community</li> </ul>	<ul style="list-style-type: none"> <li>Active community</li> </ul>

163



Streamkeepers Training Workshop

**STREAMKEEPERS GROUP**

Are you interested in learning more?

Project Watershed is hosting a Streamkeepers Program is a series of workshops. Participants will learn how to assess common aquatic insects. Upon successful completion, participants will receive a certificate.

Values	Theme	Resource Type / Description
<ul style="list-style-type: none"> <li>Local importance, reflecting contemporary values for the natural history of the Cumberland area</li> </ul>	<ul style="list-style-type: none"> <li>Quiet Life, Active Pursuits</li> <li>Creating a Diverse Community</li> </ul>	<ul style="list-style-type: none"> <li>Active community</li> </ul>

164

**FREEMASONS, ORDER OF THE EASTERN STAR, ROTARY CLUB, AND OTHER SERVICE CLUBS**

Values	Theme	Resource Type / Description
<ul style="list-style-type: none"> <li>Important legacies of community volunteerism and local initiatives</li> </ul>	<ul style="list-style-type: none"> <li>Creating a Diverse Community</li> </ul>	<ul style="list-style-type: none"> <li>Historical community</li> </ul>