

# B APPENDIX MAPS

MAP A:	FUTURE LAND USE	#1035
MAP B:	EXISTING AND PROPOSED PUBLIC FACILITIES	
MAP C:	DEVELOPMENT PERMIT AREAS OVERVIEW MAP	#1035
MAP D:	HERITAGE CONSERVATION AREA HACA1 (HISTORIC VILLAGE COMMERCIAL CORE)	
MAP E:	ENVIRONMENTAL PROTECTION AREA DPA 1	
MAP F:	GROUNDWATER PROTECTION DPA 2	
MAP G:	FARMLAND PROTECTION DPA 3	
MAP H:	WILDFIRE URBAN INTERFACE DPA 4	
MAP I:	AREAS SUITABLE FOR SAND AND GRAVEL EXTRACTION	
MAP J:	TRANSPORTATION, PARKS AND CONNECTIVITY	
MAP K:	LANDSCAPE SCREENING REQUIREMENTS FOR CUMBERLAND ROAD AFFECTED PROPERTIES	#1035

# MAP A FUTURE LAND USE

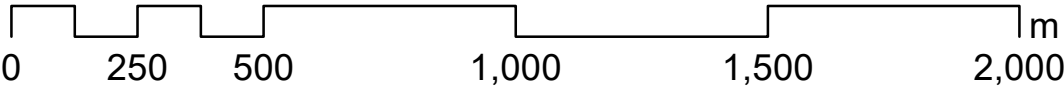
## LEGEND

- Agricultural
- Commercial
- Commercial Mixed Use
- Greenway
- Industrial\*
- Institutional
- Mixed Land Use
- Park
- Recreation
- Residential Infill
- Residential/Multi-Family
- Working Forest
- Heritage Conservation Area - HCA-1\*\*
- Historic Railway
- Village Municipal Boundary
- River or Stream
- Waterbody

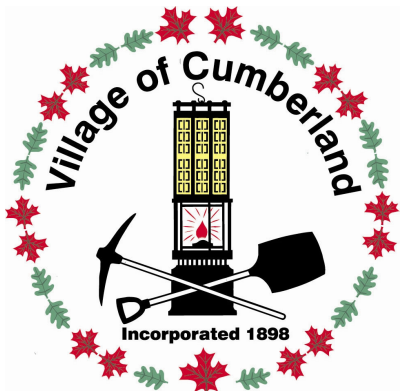
**Notes:**  
\* As development occurs in an industrial zone, consideration needs to be given to groundwater protection.

\*\* Please refer to Map D Heritage Conservation Area - Historic Village Commerical Core - HCA-1.

**Bylaw History:**  
Bylaw No. 990, 2014 - August 11, 2014 (parent bylaw)  
Bylaw 1035 - Amd#1 - September 6, 2016  
Bylaw 1115 - Amd#2 - December 14, 2020  
Bylaw 1149 - Amd#3 - August 9, 2021  
Bylaw 1136 - Amd#4 - July 10, 2023



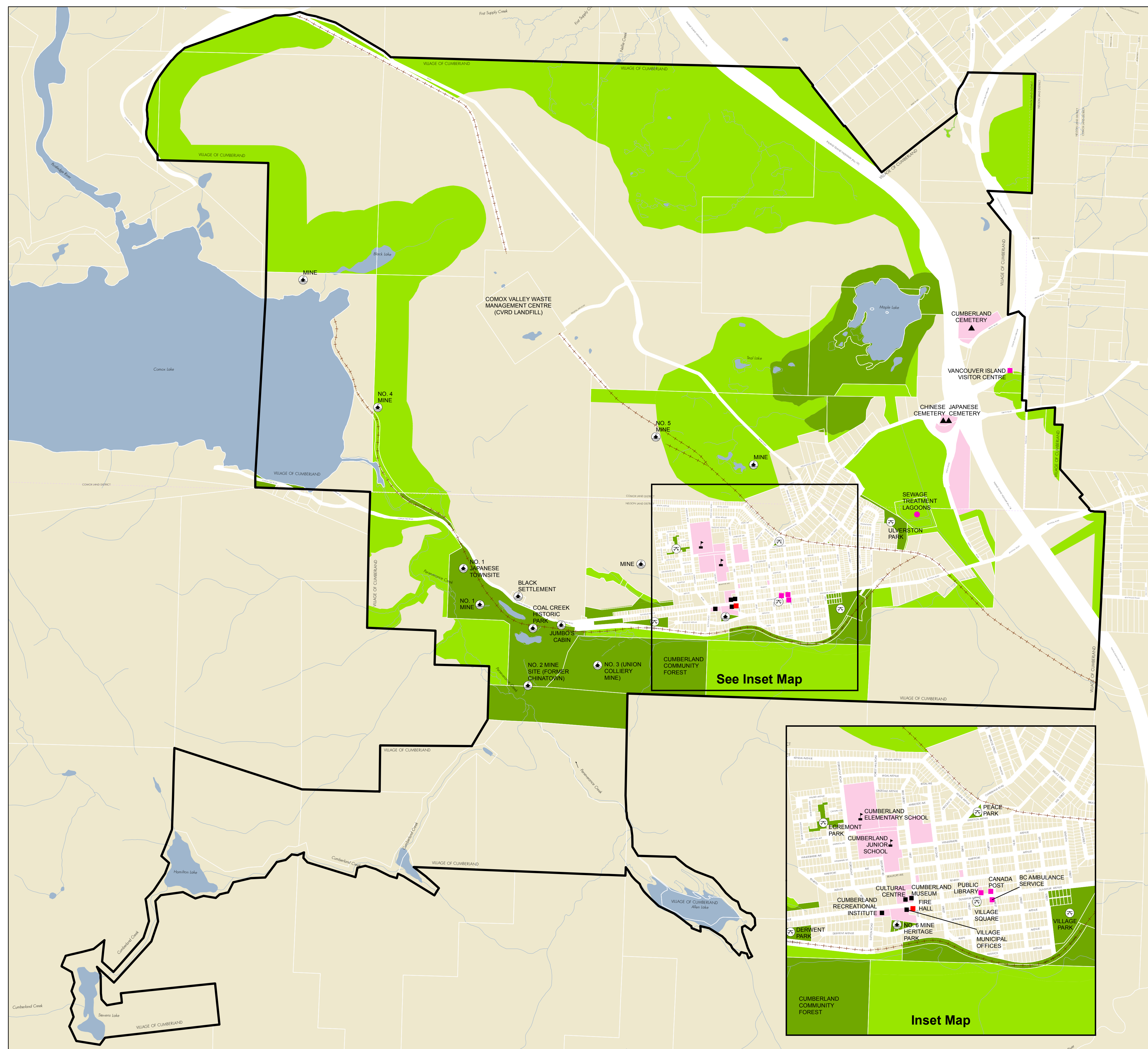
This map was prepared by the CVRD for planning purposes only, and is not a legal document. This map is a composite of different data sets that were developed from different methods and dates. This map should be used with caution. Neither the Village of Cumberland or the CVRD are responsible for any damages resulting from any omissions, deletions or errors.



# MAP B EXISTING AND PROPOSED – PUBLIC AMENITIES AND FACILITIES

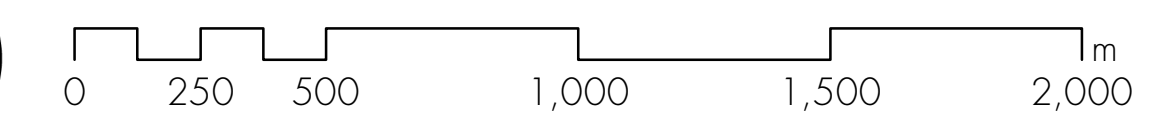
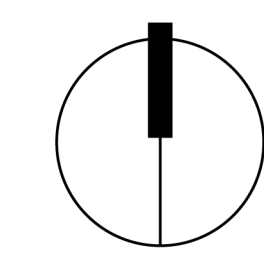
## LEGEND

- ▲ Cemetery
- Fire Hall
- ⛶ Historic Site
- Municipal Building
- Other Amenities / Facilities
- ⦿ Park
- ▴ School
- Sewage Treatment
- ▭ Village Municipal Boundary
- Historic Railway
- River or Stream
- Greenway
- Institutional
- Park
- Water Body



See Inset Map

Inset Map



Map dated  
15 Apr 2014

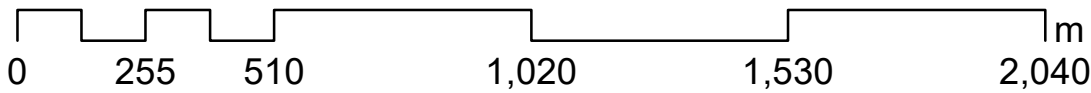
# MAP C DEVELOPMENT PERMIT AREAS

## LEGEND

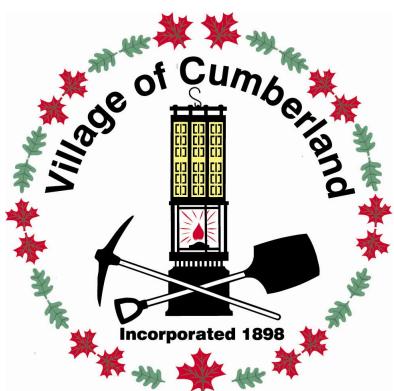
- DPA #5 - Industrial
- DPA #6 - Residential Infill
- DPA #7 - Residential Multi-Family
- DPA #8 - Mixed Land Use
- DPA #9 - Commercial
- DPA #10 - Intensive Residential - Carlisle Lane
- DPA #11 - Interchange Lands
- Historic Railway
- Village Municipal Boundary
- River or Stream
- Waterbody

**Notes:**  
For clarity, DPA maps 1, 2, 3, and 4 are provided separately.  
  
Please refer to Map D Heritage Conservation Area - Historic Village Commerical Core - HCA-1.

**Bylaw History:**  
Bylaw No. 990, 2014 - August 11, 2014 (parent bylaw)  
Bylaw 1035 - Amd#1 - September 6, 2016  
Bylaw 1115 - Amd#2 - December 14, 2020  
Bylaw 1149 - Amd#3 - August 9, 2021  
Bylaw 1136 - Amd#4 - July 10, 2023



This map was prepared by the CVRD for planning purposes only, and is not a legal document. This map is a composite of different data sets that were developed from different methods and dates. This map should be used with caution. Neither the Village of Cumberland or the CVRD are responsible for any damages resulting from any omissions, deletions or errors.

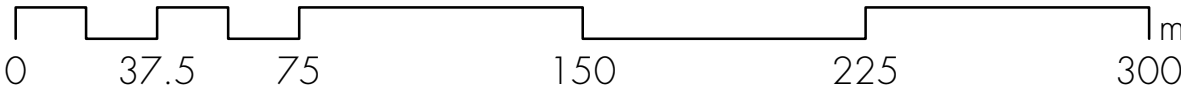
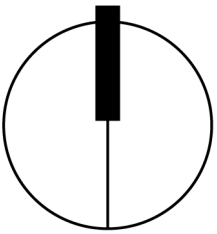




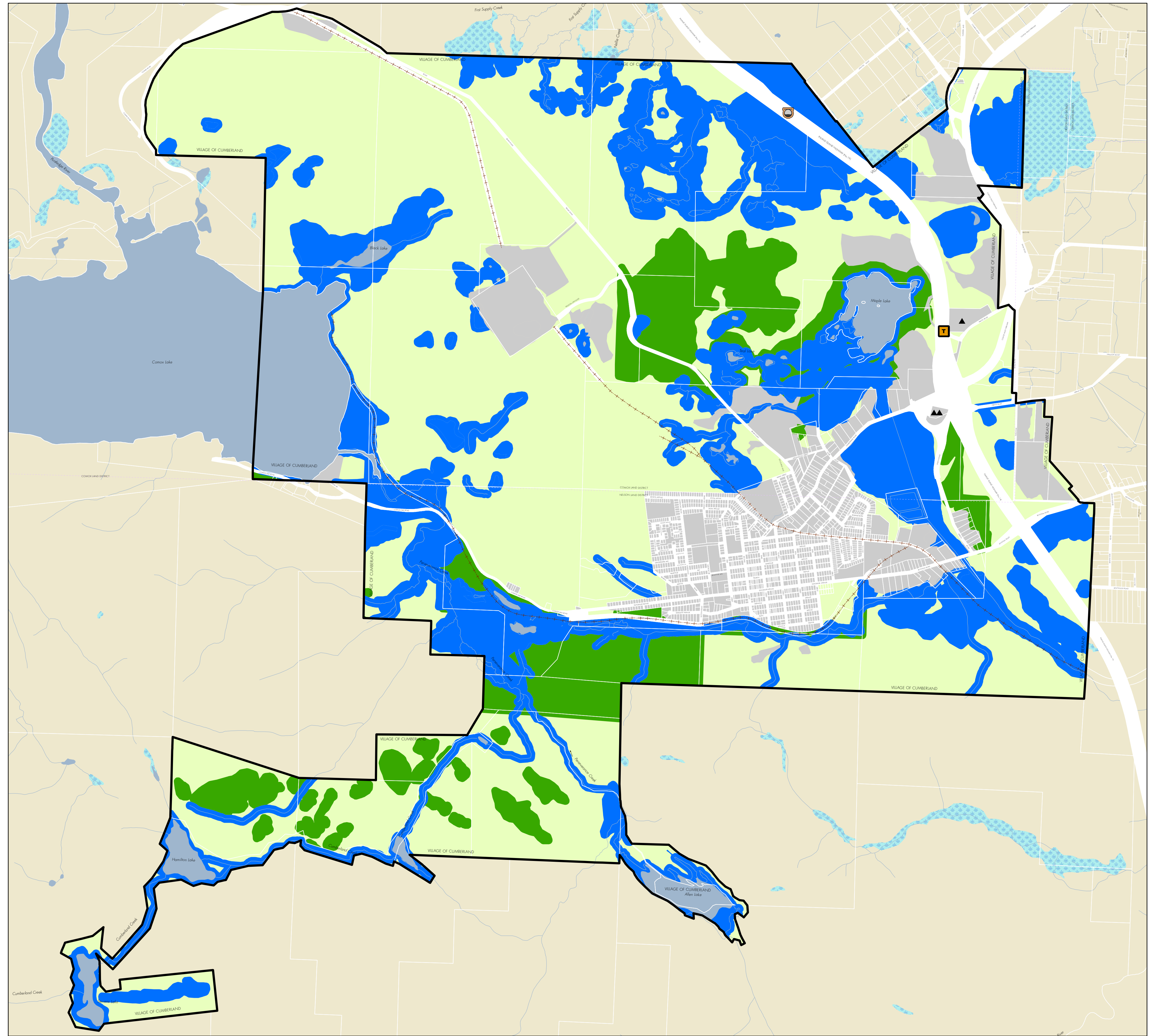
MAP D  
HERITAGE CONSERVATION AREA –  
HISTORIC VILLAGE COMMERCIAL CORE HCA-1

LEGEND

-  Heritage Conservation Area
-  Historic Village Commercial Core



Map dated  
15 April 2014



# MAP E DPA #1 - ENVIRONMENTAL PROTECTION

## LEGEND

### CORE AREA

Aquatic Ecosystem Areas

Wetlands and Watercourses

Lakes

River or Stream

Terrestrial Ecosystem Areas

Forests, rocky outcrops, cliffs and bluffs

### CONNECTIVITY AREA

Connectivity Area

Cemetery

Culvert > 3000 mm

Tunnel

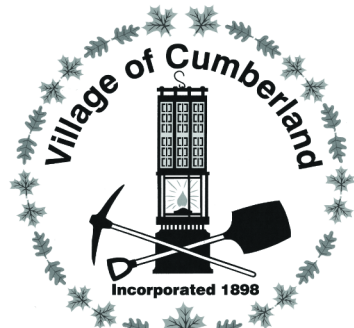
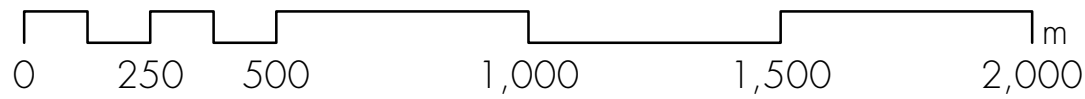
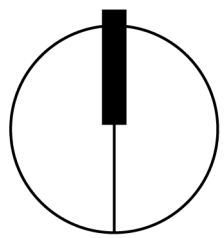
Village Municipal Boundary

Historic Railway

Wetland

Disturbed Area



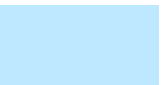



Source: Ecosystem mapping and connectivity areas provided by the Comox Valley Conservation Strategy (CVCS).



Map dated  
15 April 2014

MAP F  
DPA #2 -  
GROUNDWATER PROTECTION

LEGEND

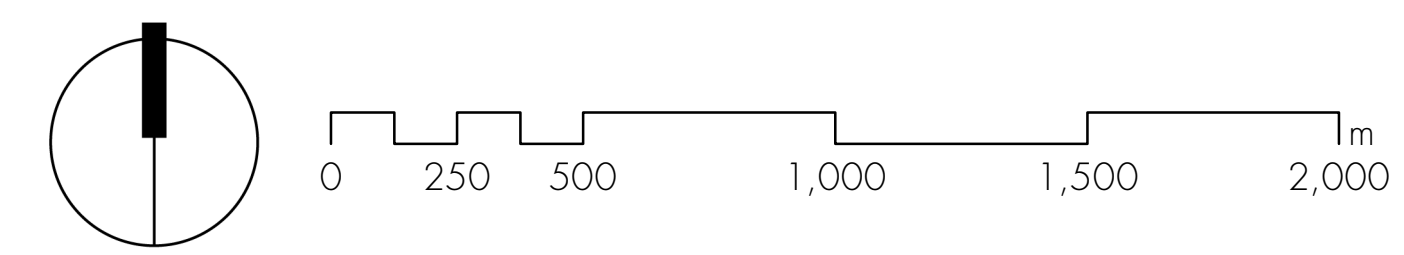
-  Village of Cumberland Pumping Well
-  Village Water Supply Aquifer  
(Approximate aquifer location and extent)
-  Groundwater Aquifer
-  Watershed Boundary
-  Village Municipal Boundary
-  Water Body

Notes:  
As development occurs in an industrial zone, consideration needs to be given to groundwater protection

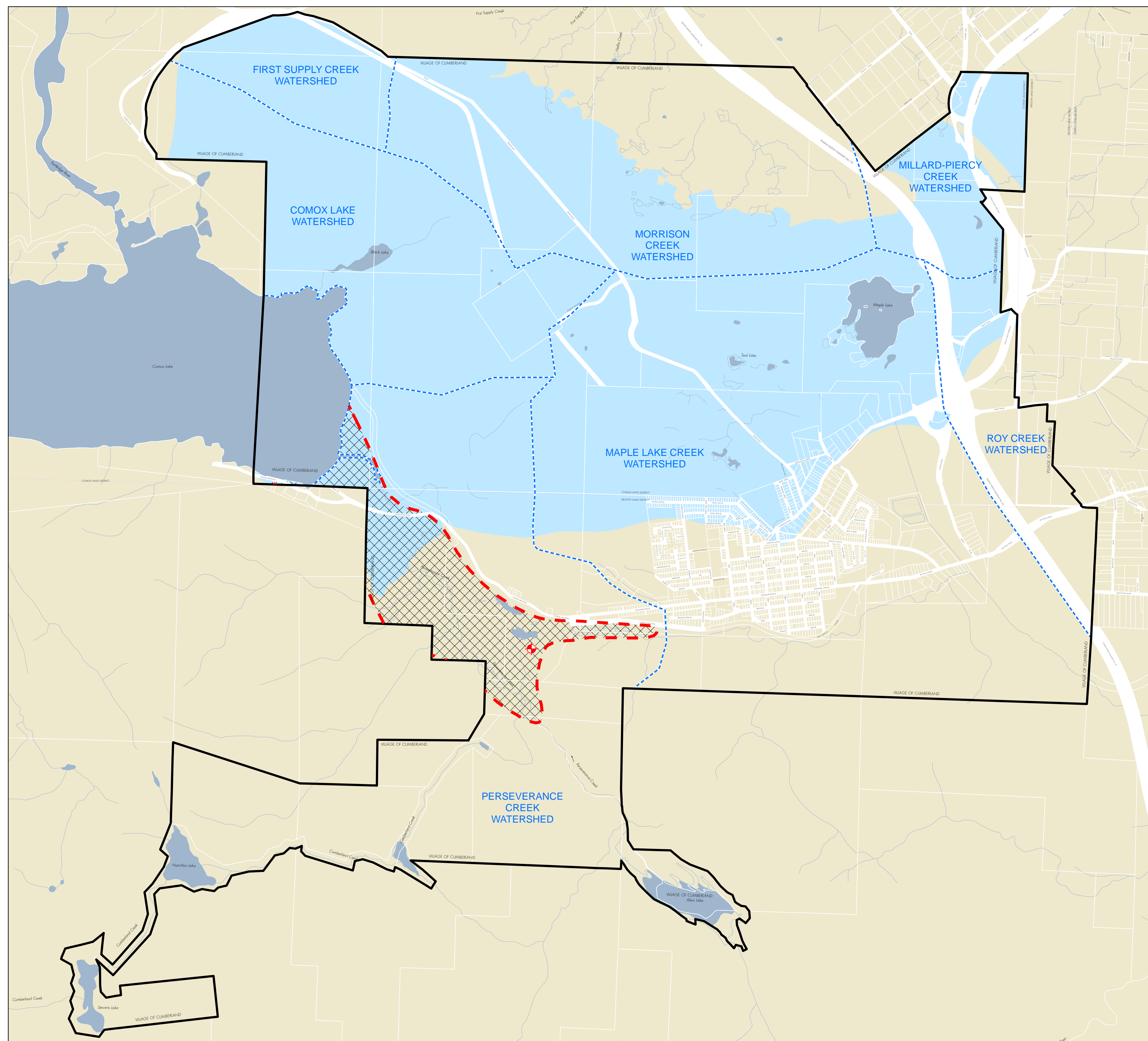
Village water supply aquifer approximate location and extent as drawn by GEC Guiton Environmental Consulting Ltd.

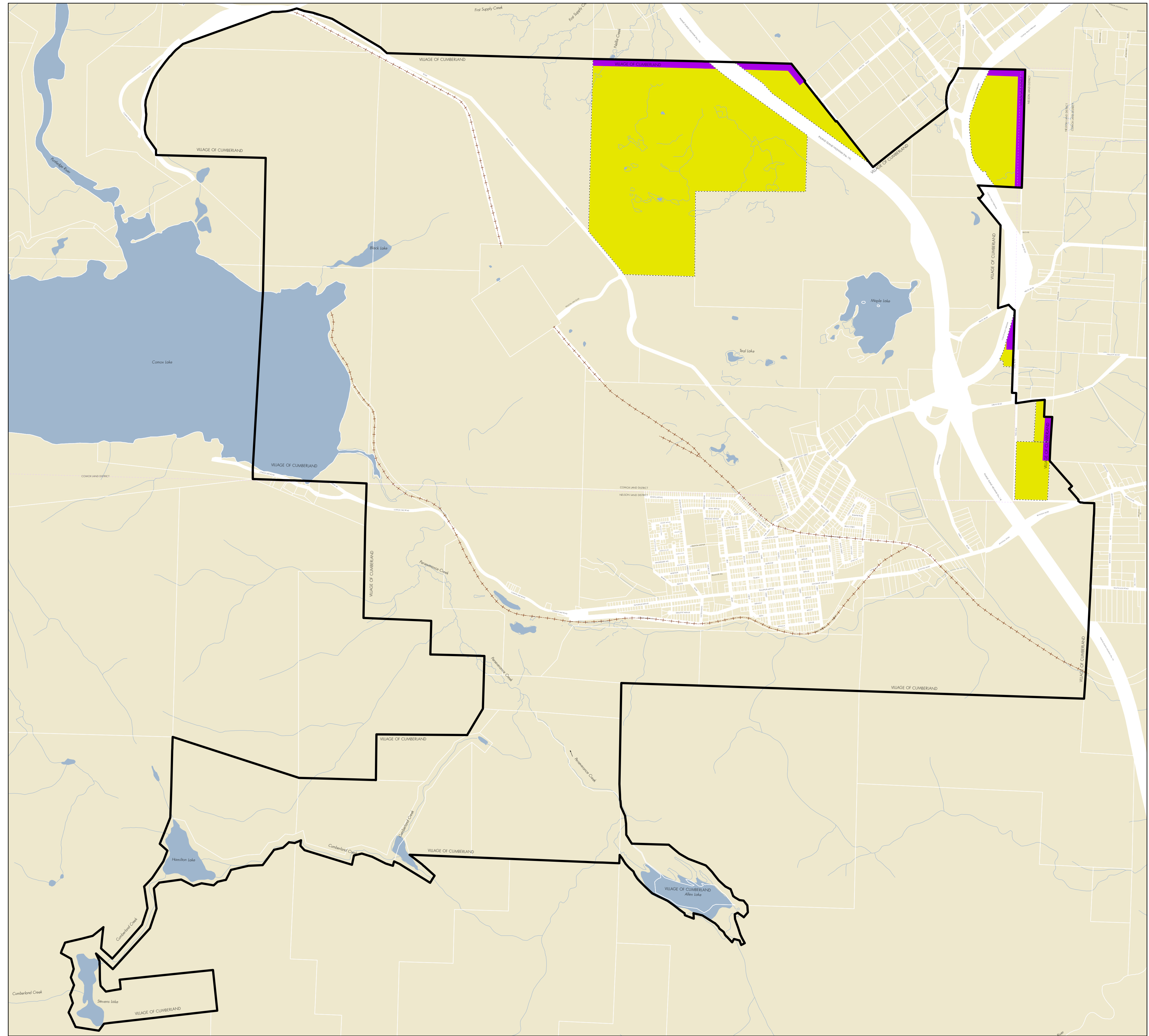
Groundwater aquifer extent provided by the government of British Columbia, 2013.

This mapping is not a replacement for site specific investigations, nor should maps be used as a sole basis for land use decisions.



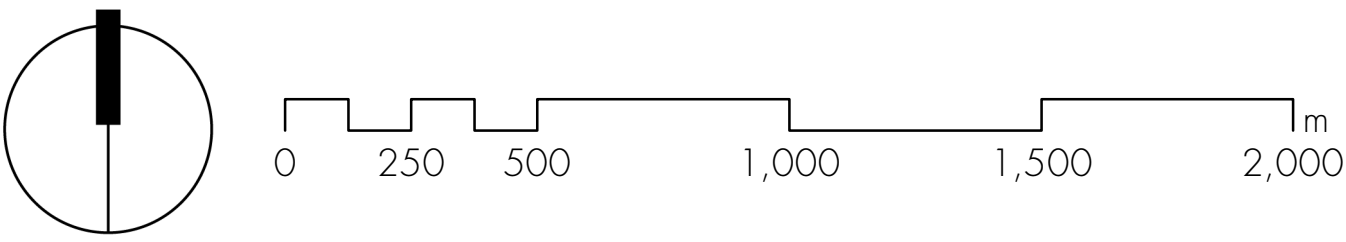
Map dated  
15 April 2014



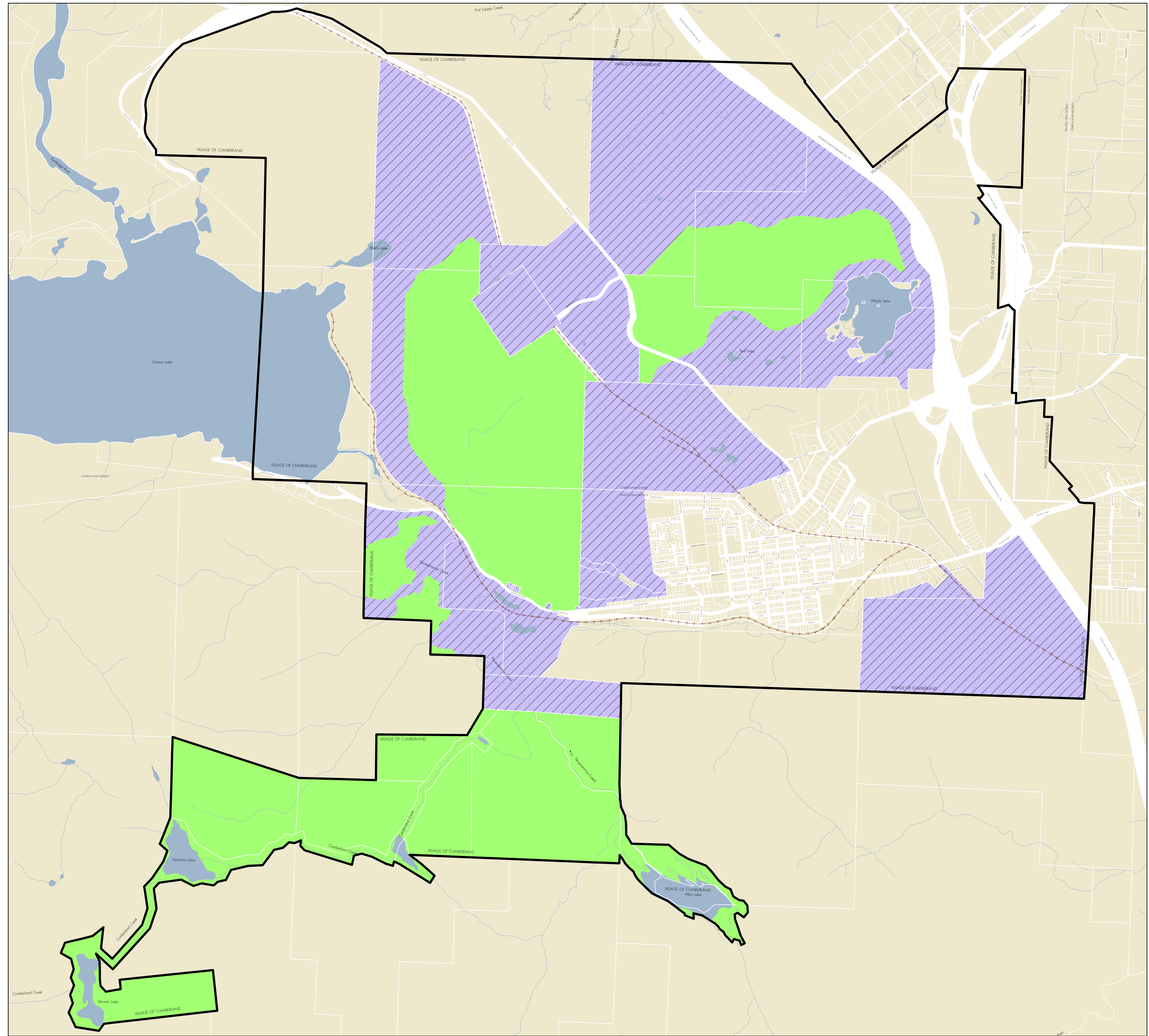


# MAP G DPA #3 - FARMLAND PROTECTION

- ## LEGEND
- Farmland Protection Buffer
  - Parcel Requiring Farmland Protection
  - Village Municipal Boundary
  - Historic Railway
  - River or Stream
  - Water Body

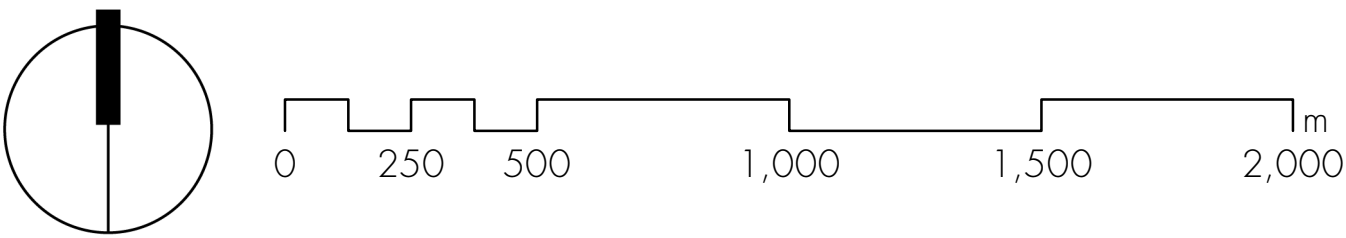


Map dated  
15 April 2014



# MAP H DPA # 4 - WILDFIRE URBAN INTERFACE

- ## LEGEND - Wildfire Urban Interface Land - Working Forest - Village Municipal Boundary - Historic Railway - River or Stream - Water Body

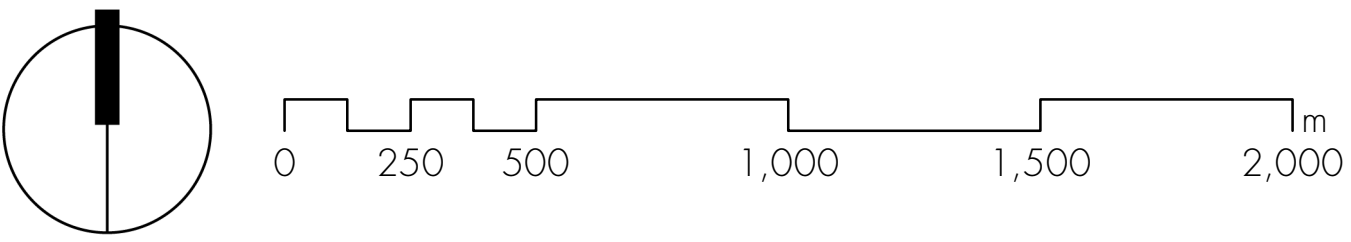
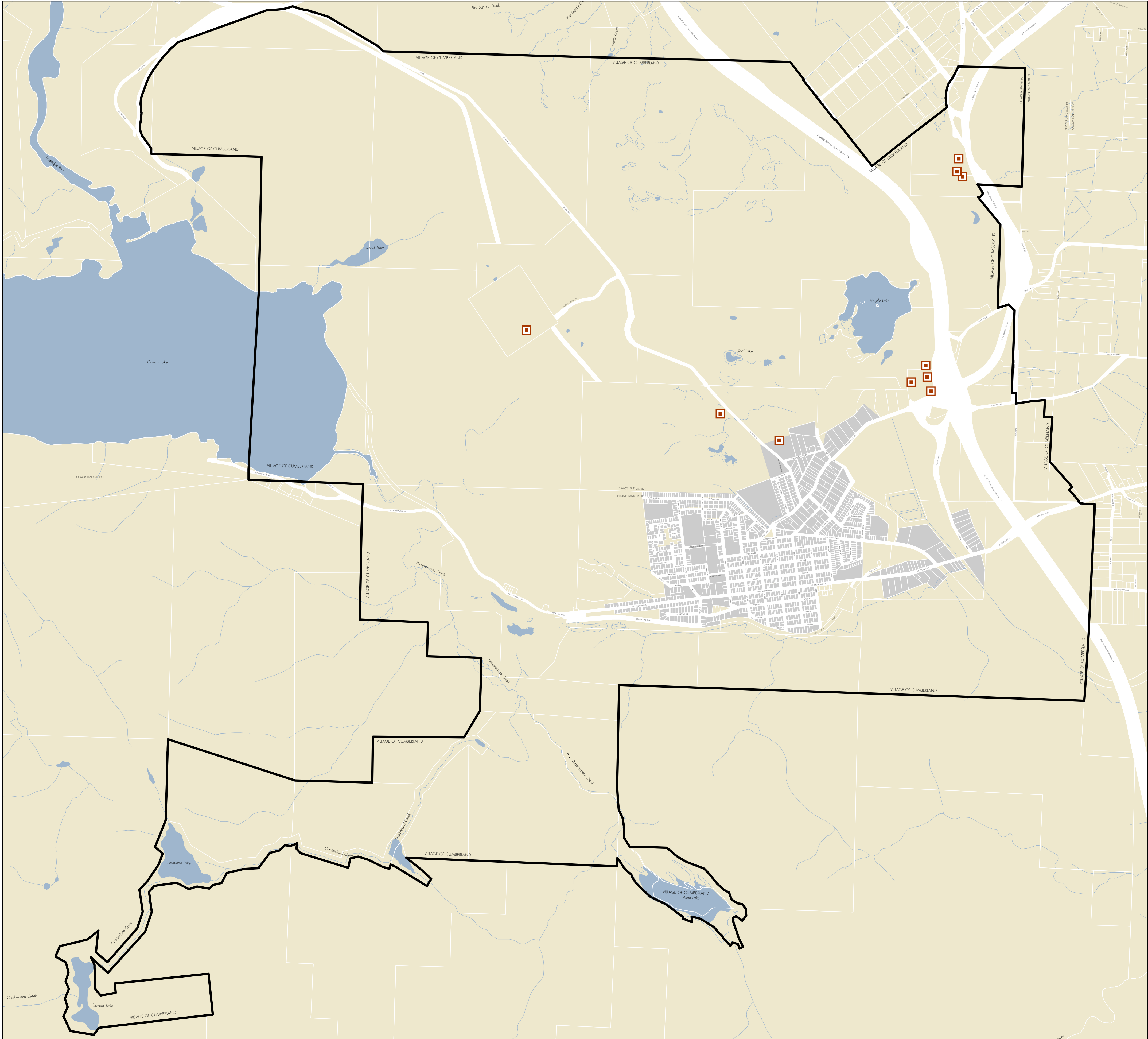


Map dated  
15 April 2014

# MAP I AREAS SUITABLE FOR SAND AND GRAVEL EXTRACTION

## LEGEND

- Area Suitable for Sand and Gravel Extraction
- Established Urban Area
- Village Municipal Boundary
- River or Stream
- Water Body



Map dated  
24 April 2014

MAP J  
TRANSPORTATION, PARKS  
AND CONNECTIVITY

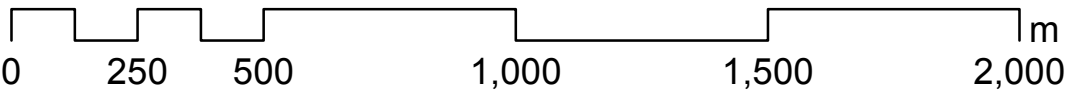
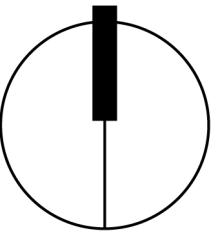
LEGEND

Park Classification:

- C Community Park
- G Greenway
- N Neighbourhood Park
- P Pocket Park
- R Regional Park

- Gravel Road
- Major Connector
- Minor Connector
- Mountain Bike Trail
- Proposed Trail or Connection
- Trail (Comox Valley Tourism Data)

- Existing or Proposed Park
- Greenway
- Proposed Municipal Park / Proposed Greenway
- Proposed Protection Area
- Recreation
- Village Municipal Boundary
- Historic Railway
- River or Stream
- Water Body





Map dated  
24 April 2014


# MAP K LANDSCAPE SCREENING REQUIREMENTS FOR CUMBERLAND ROAD AFFECTED PROPERTIES

## LEGEND

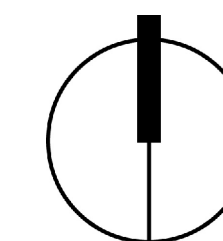
 Affected Properties

 Village Municipal  
Boundary

 Waterbody

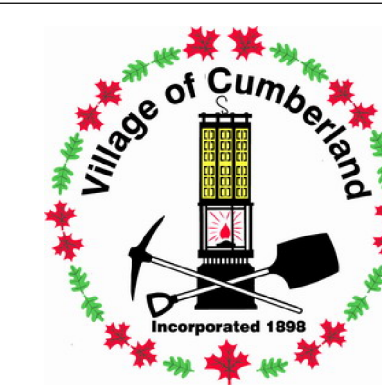
 River or Stream

Note: This figure is for information purposes only.



1:2,500  
(At original document size of 32" x 24")

0 25 50 100 150 200 250 m



Rev. No.: C11-12  
Date: June 13, 2016

Village of Cumberland OCP Amendment Bylaw  
No. 1035, 2016

\\Cd\1183-103\workgroup\1232\project\116542022\figures\reports\fig\_116542022\_11\_ScheduleD\_Landscape\_Screening\_Requirements.mxd  
Disclaimer: Stantec assumes no responsibility for data supplied in electronic format. The recipient accepts full responsibility for verifying the accuracy and completeness of the data.  
The recipient releases Stantec, its officers, employees, consultants and agents, from any and all claims arising in any way from the content or provision of the data.

