

MAP A Land Use Designations

LEGEND

Land Use Designations:

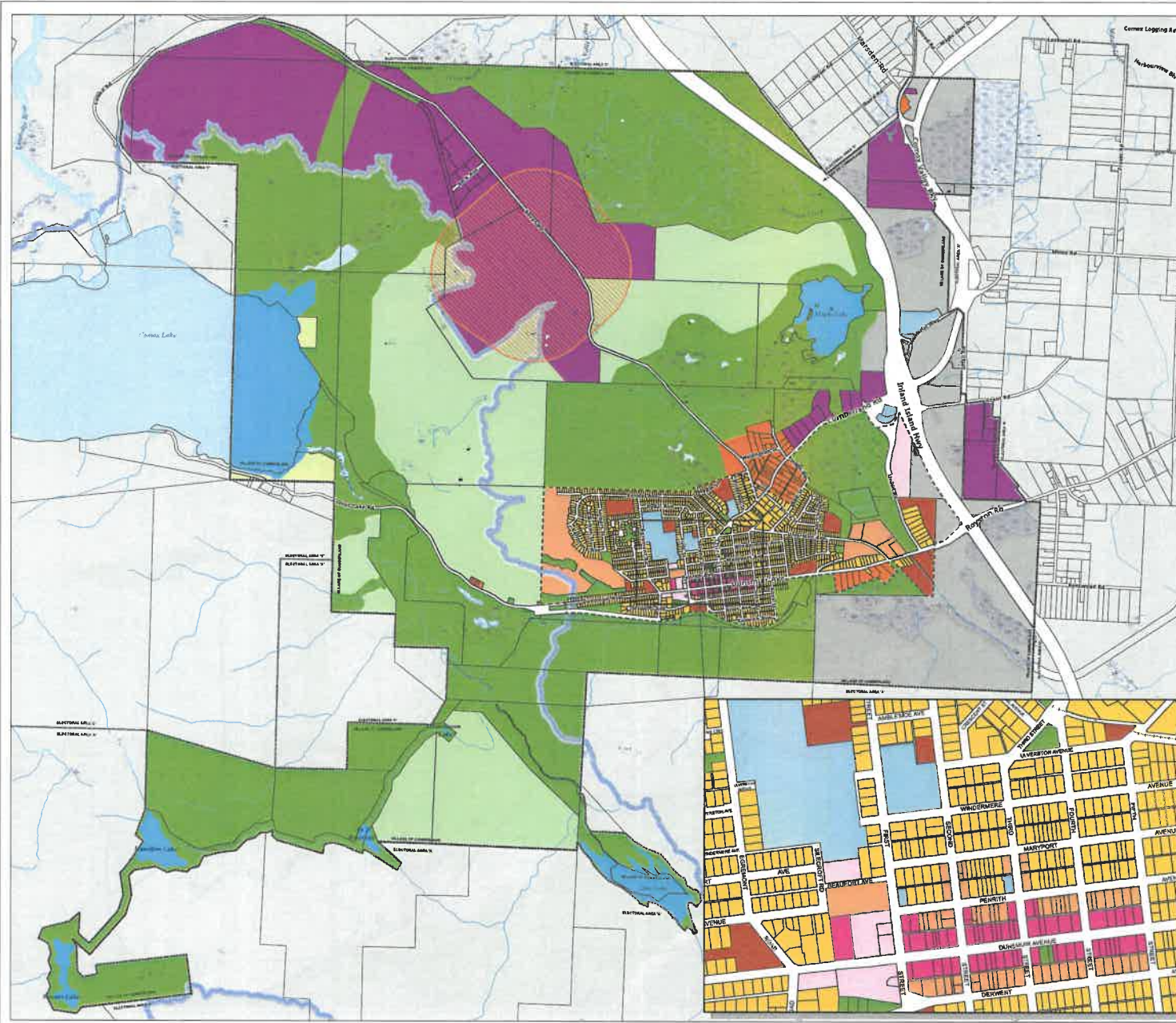
- Commercial Mixed Use
- Industry
- Institutional
- Mixed Use - Civic Facilities
- Mixed Use
- Multi-Unit Residential
- Residential Infill
- Recreation
- Residential Large Lots
- Interchange Lands
- Parks, Greenways and Open Space
- Working Forest
- Freshwater

Hydrology:

- Ditch
- River or Stream
- Wetland
- Waterbody
- Comox Lake Watershed Boundary

Other:

- Urban Containment Boundary
- Landfill Buffer
- Village Municipal Boundary
- CVRD Electoral Area Boundary



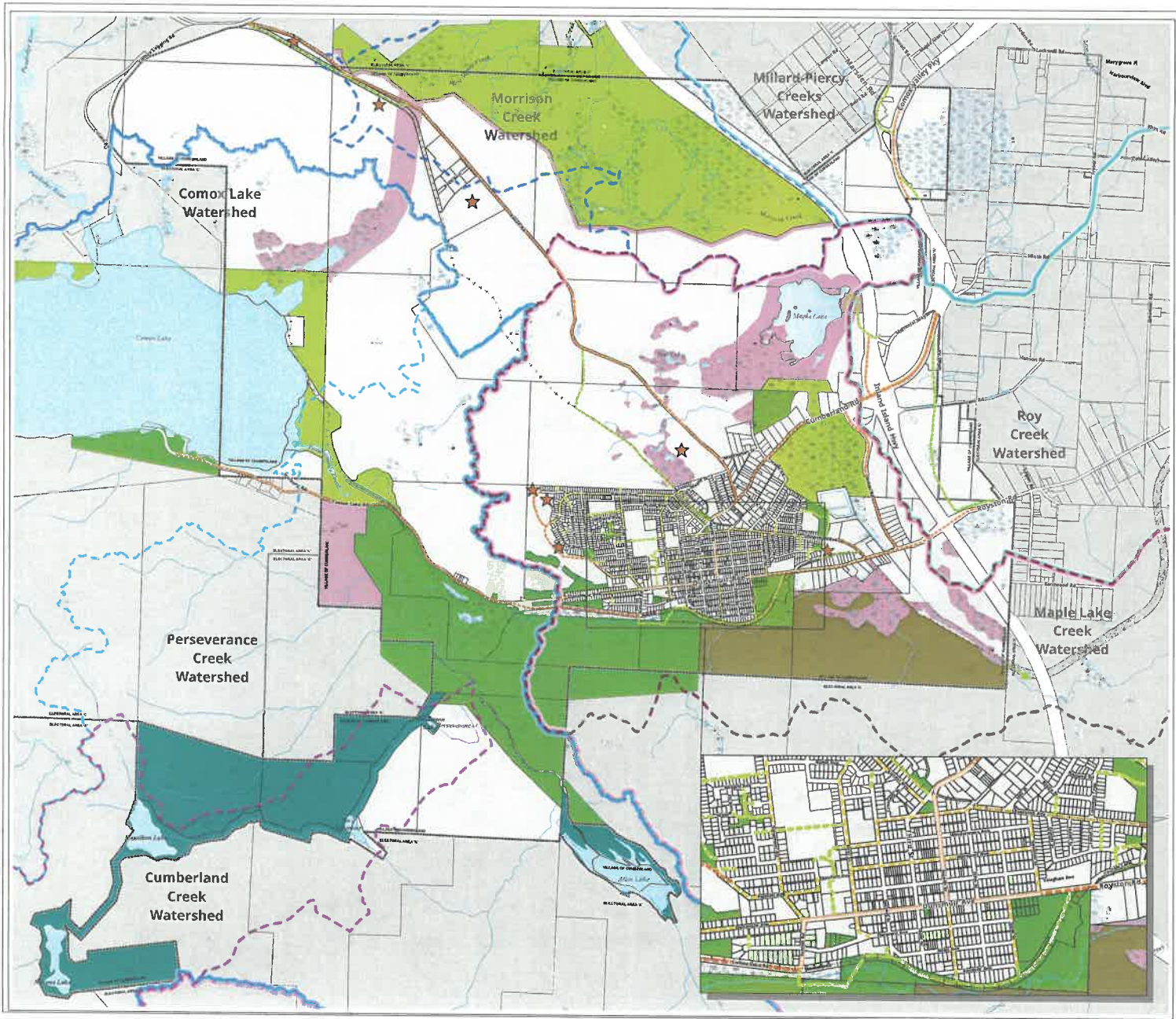
Map Interpretation:
Land use designations include streams.
Land use designations extend to the mid-line of road rights-of-way.



This map has been compiled by the CVRD to identify OCP land use designations in the Village of Cumberland. Neither the Village nor the CVRD accept responsibility or liability for any errors, omissions or inaccuracies of the supporting data.



Village of Cumberland Official Community Plan Bylaw No. 1230, 2025

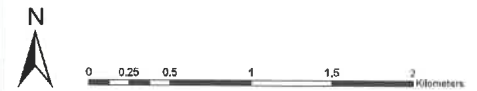


MAP B Active Transportation Network, Parks, Trails and Conservation Lands

LEGEND

- | | |
|---|--------------------------------|
| Existing: | Proposed: |
| Active Transportation Corridor | Active Transportation Corridor |
| Shared Street | Shared Street |
| Multi-Use Trail | Multi-Use Trail |
| Conservation Lands | Municipal Trail Corridor |
| Municipal Park | Municipal Park |
| Village Forest Lands / Drinking Water Supply Area | Conservation Lands |
| | Protected Area |
| Hydrology: | Watersheds: |
| Dish | Maple Lake Creek |
| River or Stream | Cumberland Creek |
| Wetland | Morrison Creek |
| Waterbody | Perseverance Creek |
| Other: | Millard-Piercy Creeks |
| Historic Railway | Roy Creek |
| Royston to Cumberland Railway Trail | Trent River Watershed |
| Village Municipal Boundary | Comox Lake Watershed |
| CVRD Electoral Area Boundary | |

Notes:
Recreational trails within parks, including those within the Cumberland Community Forest, are not displayed on this map. Multi-use trails that provide key connections and contribute to the active transportation network are displayed.
Other than the Comox Lake Watershed, no other watershed boundaries have been surveyed/ground truthed with LIDAR or any other means.



This map has been compiled by the CVRD for the Village of Cumberland. Neither the Village nor the CVRD accept responsibility or liability for any errors, omissions or inaccuracies of the supporting data.

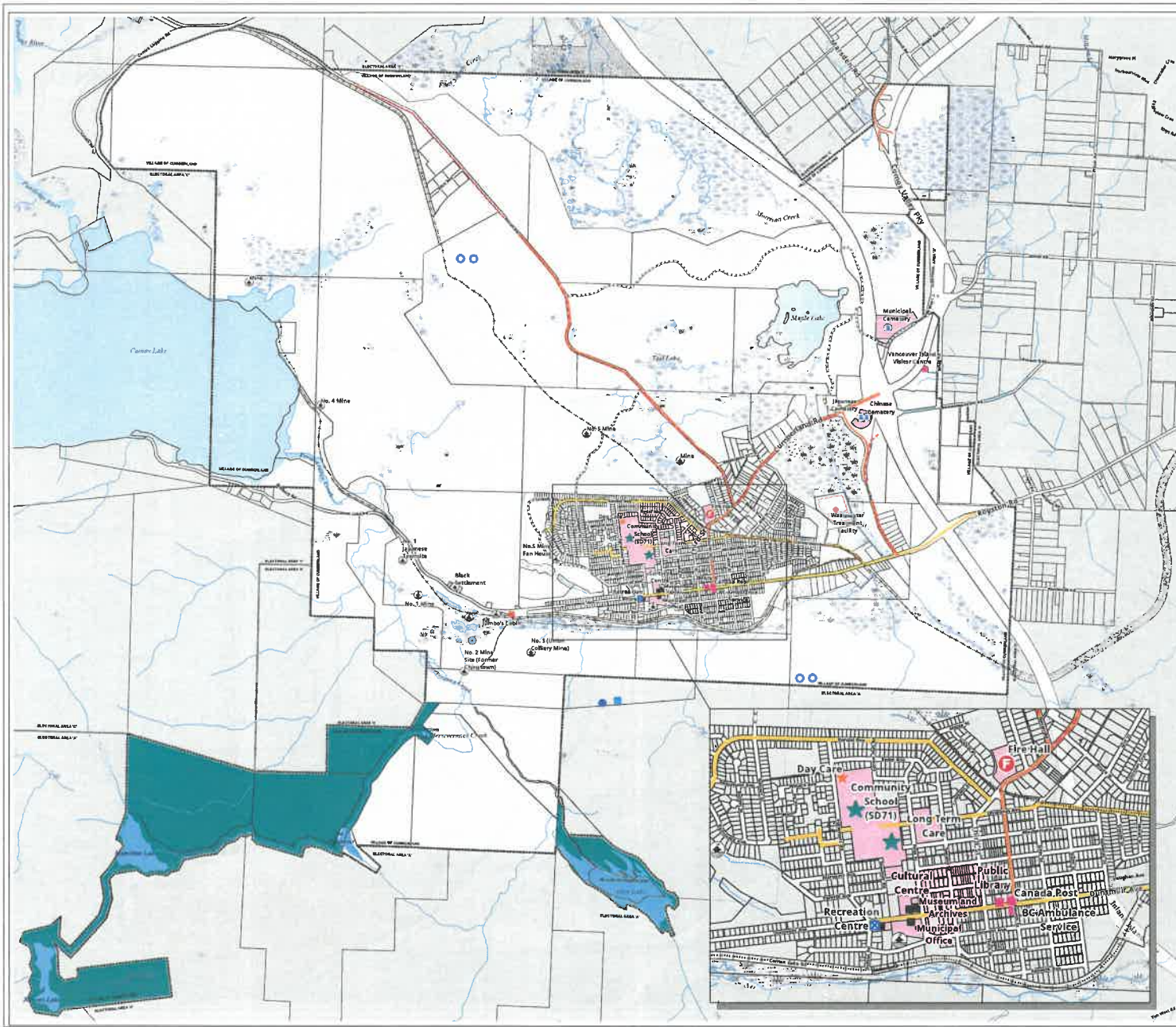


Village of Cumberland Official Community Plan Bylaw No. 1230, 2025

MAP C Public Facilities, Major Roads, Sewer and Water Systems

LEGEND

- | | |
|---|---|
| <p>Public Facilities:</p> <ul style="list-style-type: none"> ■ Municipal Building 🔥 Fire Hall ☠️ Cemetery 📍 Historic Site 🏠 Other Amenities / Facility 🎓 School 👶 Day Care <p>Water System:</p> <ul style="list-style-type: none"> ⊕ Coal Creek Well 🌊 Reservoir 🏠 Water Treatment Plant ⚙️ Pump Station 🏠 Pump Control Building 🌊 Cumberland Drinking Water Lakes <p>Sewer System:</p> <ul style="list-style-type: none"> 🔴 Sewage Treatment <p>Major Roads:</p> <ul style="list-style-type: none"> 🛣️ Arterial Road 🛣️ Collector Road <p>Lands:</p> <ul style="list-style-type: none"> 🏠 Existing Institutional Uses 🌲 Village Forest Lands / Drinking Water Supply Area | <p>Road Network:</p> <ul style="list-style-type: none"> 🛣️ Future Road Connections <p>Water System:</p> <ul style="list-style-type: none"> 🌊 Future Reservoir <p>Sewer System:</p> <ul style="list-style-type: none"> 🔴 Future Sanitary Sewer <p>Hydrology:</p> <ul style="list-style-type: none"> 🌊 Ditch 🌊 River or Stream 🌿 Wetland 🌊 Waterbody <p>Other:</p> <ul style="list-style-type: none"> 🚂 Historic Railway 🏠 Village Municipal Boundary 🏠 CVRD Electoral Area Boundary |
|---|---|



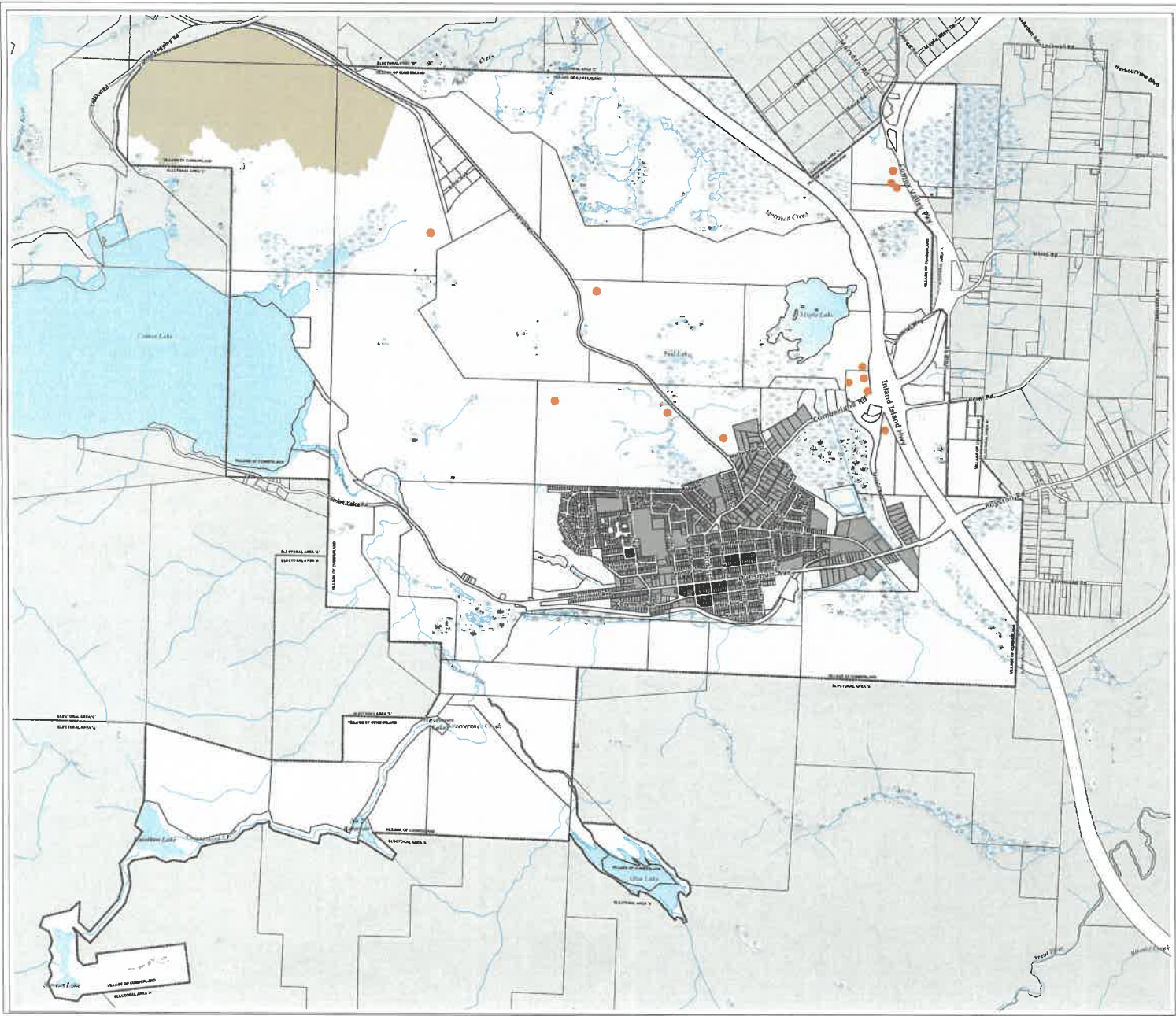
This map has been compiled by the CVRD for the Village of Cumberland. Neither the Village nor the CVRD accept responsibility or liability for any errors, omissions or inaccuracies of the mapping data.



MAP D Areas Suitable for Sand and Gravel Extraction

LEGEND

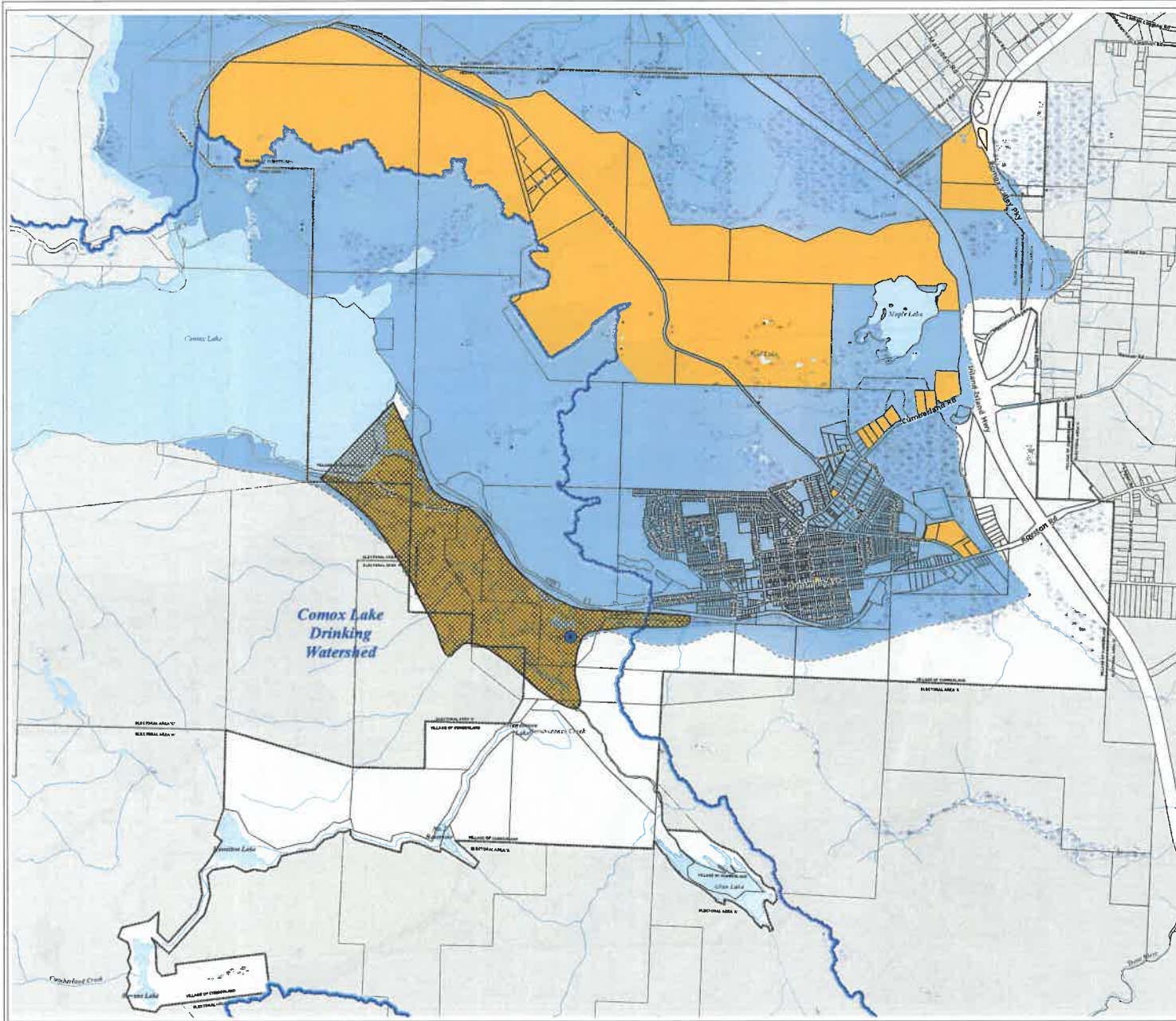
- Notice of Works, Mines Act Permits (at 07/2025)
- Area Suitable for Sand and Gravel Extraction
- Established Urban Area
- Hydrology:**
 - Ditch
 - River or Stream
 - Wetland
 - Waterbody
- Other:**
 - Village Municipal Boundary
 - CVRD Electoral Area Boundary



This map has been compiled by the CVRD for the Village of Cumberland. Neither the Village nor the CVRD accept responsibility or liability for any errors, omissions or inaccuracies of the supporting data.














Village of Cumberland Official Community Plan Bylaw No. 1230, 2025



MAP F DPA 2 Groundwater Protection

LEGEND

- | | |
|--|--|
|  DPA 2 Groundwater Protection | Other: |
|  Village Water Supply Area |  Village Municipal Boundary |
|  Village Pumping Well (Coal Creek Well) |  CVRD Electoral Area Boundary |
| Hydrology: | |
|  Ditch |  River or Stream |
|  Wetland |  Waterbody |
|  Groundwater Aquifer |  Comox Lake Watershed |

Notes:
Village water supply aquifer approximate location and extent as drawn by GEC Gulton Environmental Consulting Ltd., in 2011.

The area of the groundwater aquifer corresponds to Aquifer 417 Puntledge/Cumberland, an unconsolidated aquifer with high vulnerability to surface contamination, mapped and described by the BC Government in 2019.



0 0.25 0.5 1 1.5 2 Kilometers










This map has been compiled by the CVRD for the Village of Cumberland. Neither the Village nor the CVRD accept responsibility or liability for any errors, omissions or inaccuracies of the supporting data.

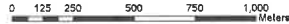
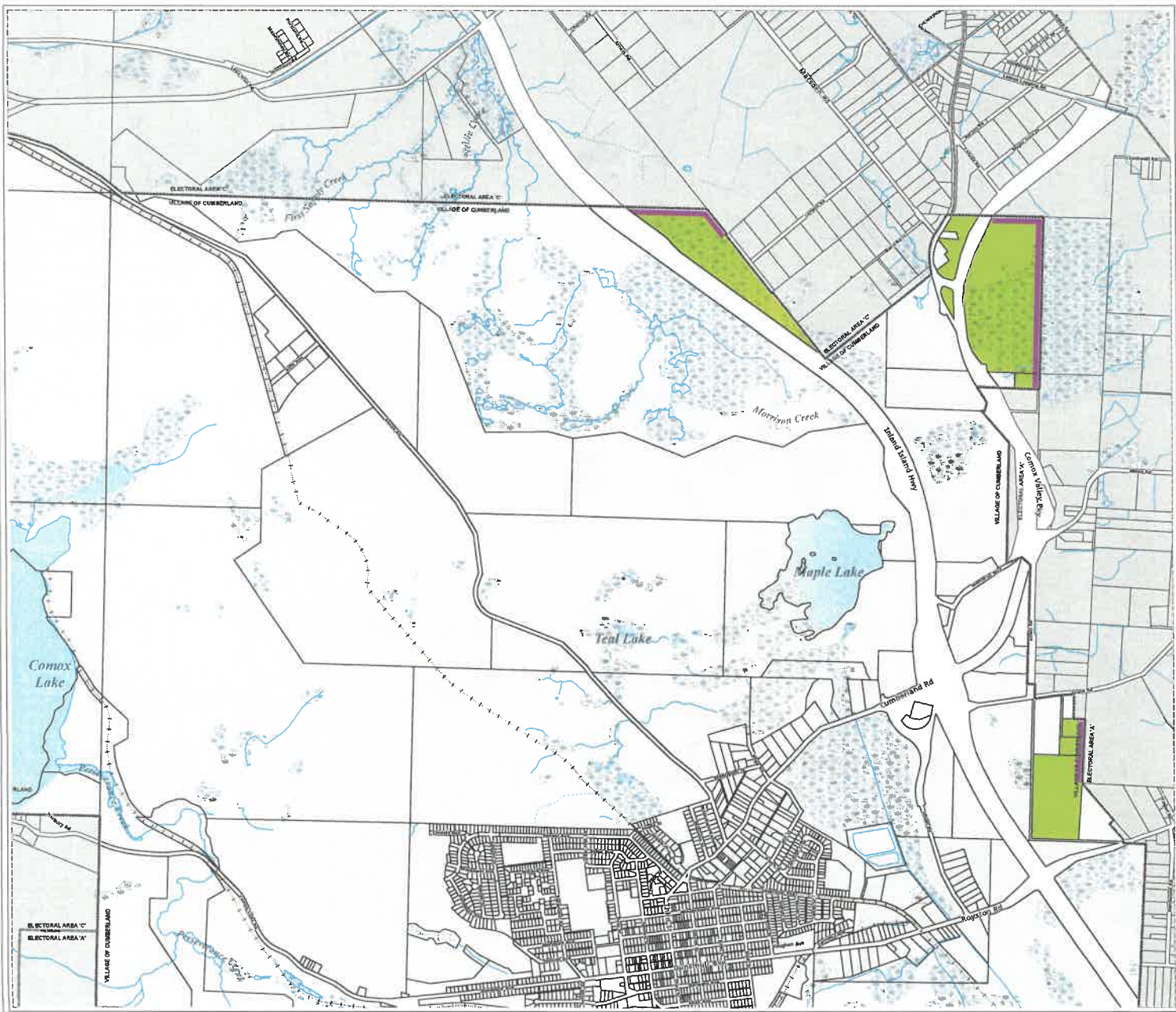


Village of Cumberland Official Community Plan Bylaw No. 1230, 2025

MAP G DPA 3 Farmland Protection

LEGEND

- DPA 3:**
-  Farmland Protection Buffer
 -  Parcel Requiring Farmland Protection
- Hydrology:**
-  Ditch
 -  River or Stream
 -  Wetland
 -  Waterbody
- Other:**
-  Historic Railway
 -  Village Municipal Boundary
 -  CVRD Electoral Area Boundary



This map has been compiled by the CVRD for the Village of Cumberland. Neither the Village nor the CVRD accept responsibility or liability for any errors, omissions or inaccuracies of the supporting data.



Village of Cumberland Official Community Plan Bylaw No. 1230, 2025

MAP H DPA 4 Wildland Urban Interface

LEGEND

 DPA 4 Wildland Urban Interface

Hydrology:

 Ditch

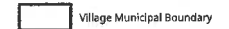
 River or Stream

 Wetland

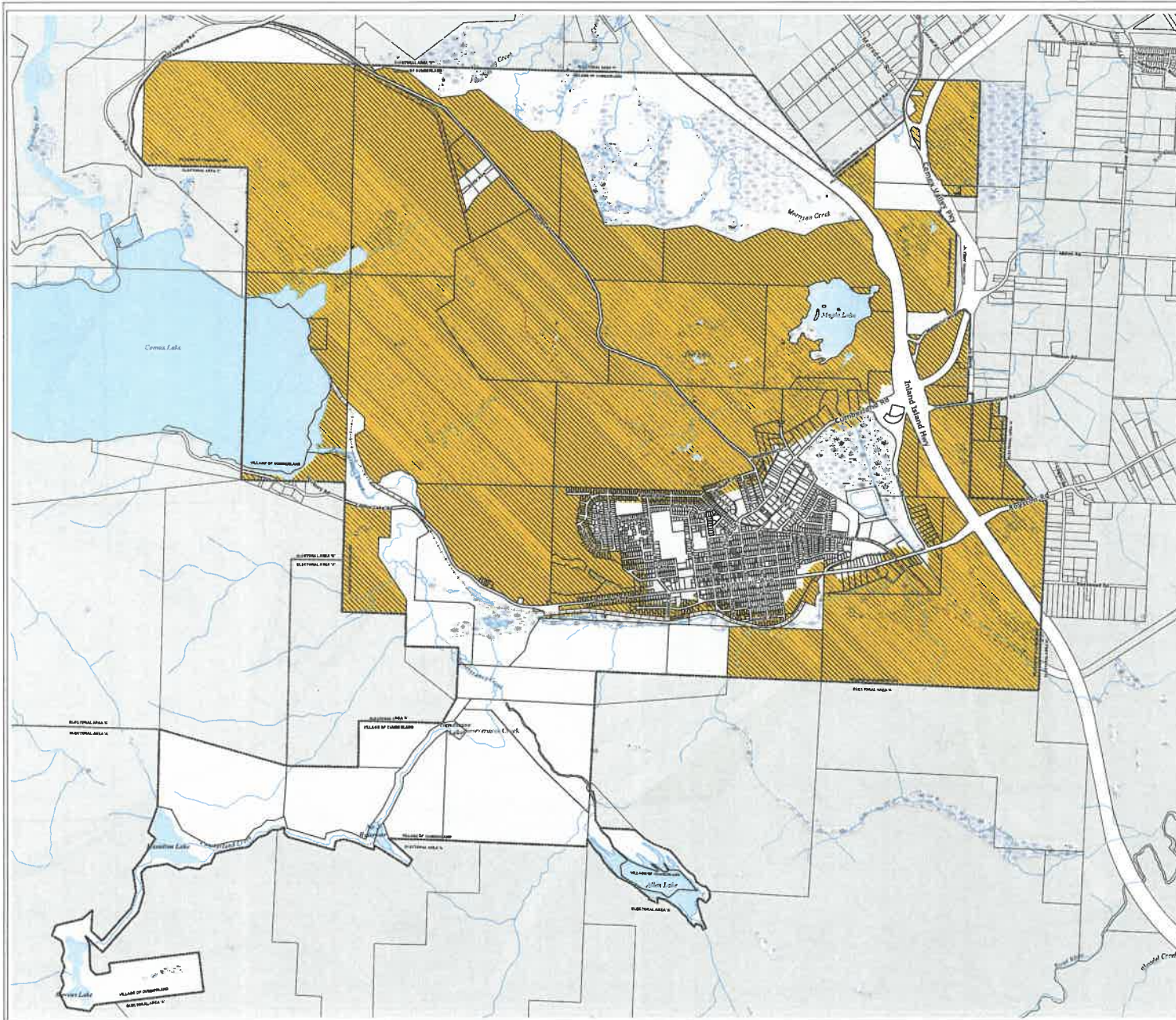
 Waterbody

Other:

 Historic Railway

 Village Municipal Boundary

 CVRD Electoral Area Boundary



This map has been compiled by the CVRD for the Village of Cumberland. Neither the Village nor the CVRD accept responsibility or liability for any errors, omissions or inaccuracies of the supporting data.

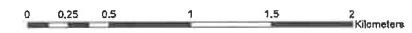
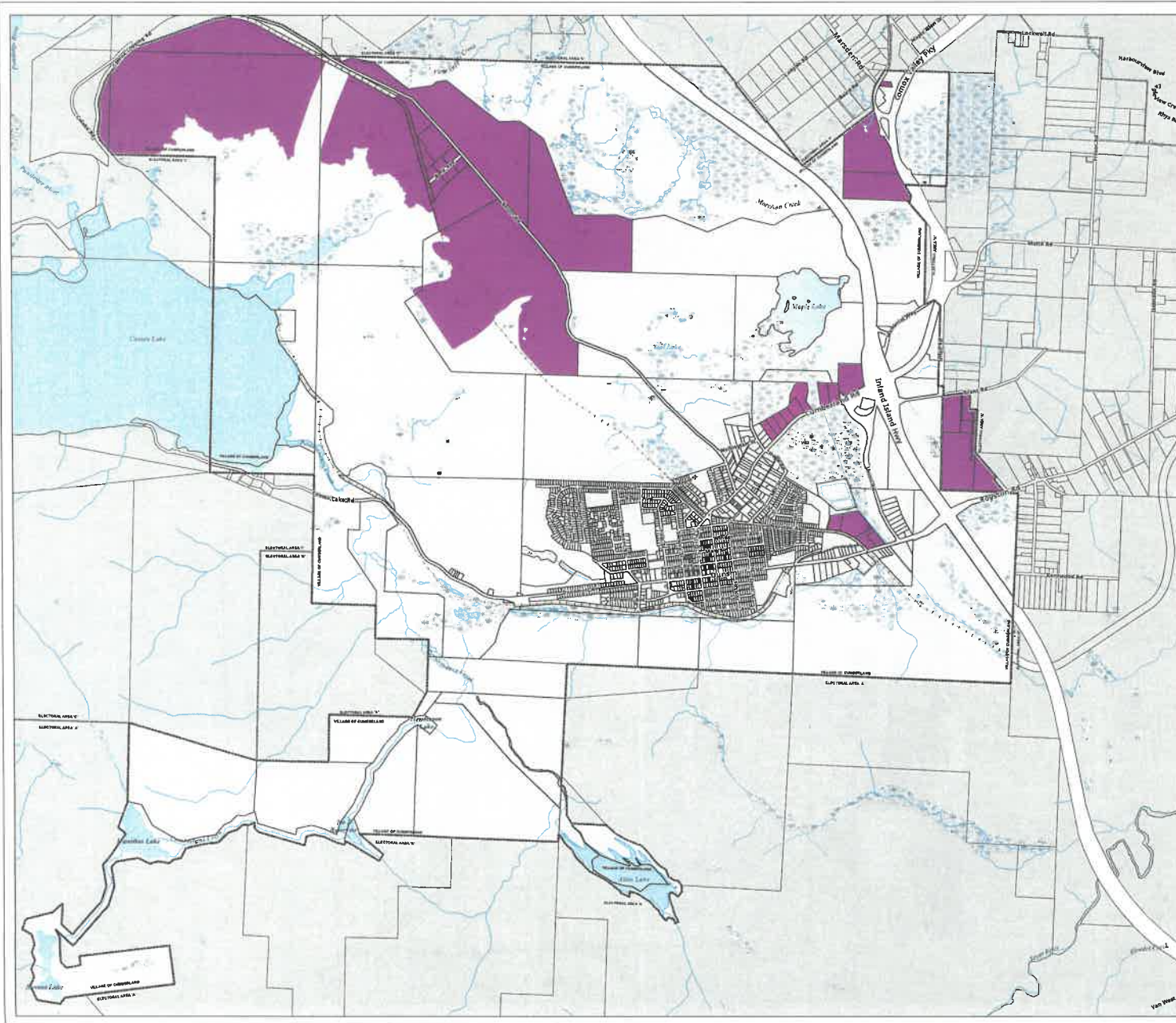


Village of Cumberland Official Community Plan Bylaw No. 1230, 2025

MAP I DPA 5 Industry Development Permit Area

LEGEND

- DPA 5 Industry
- Hydrology:**
 - Ditch
 - River or Stream
 - Wetland
 - Waterbody
- Other:**
 - Historic Railway
 - Village Municipal Boundary
 - CVRD Electoral Area Boundary



This map has been compiled by the CVRD for the Village of Cumberland. Neither the Village nor the CVRD accept responsibility or liability for any errors, omissions or inaccuracies in the supporting data.

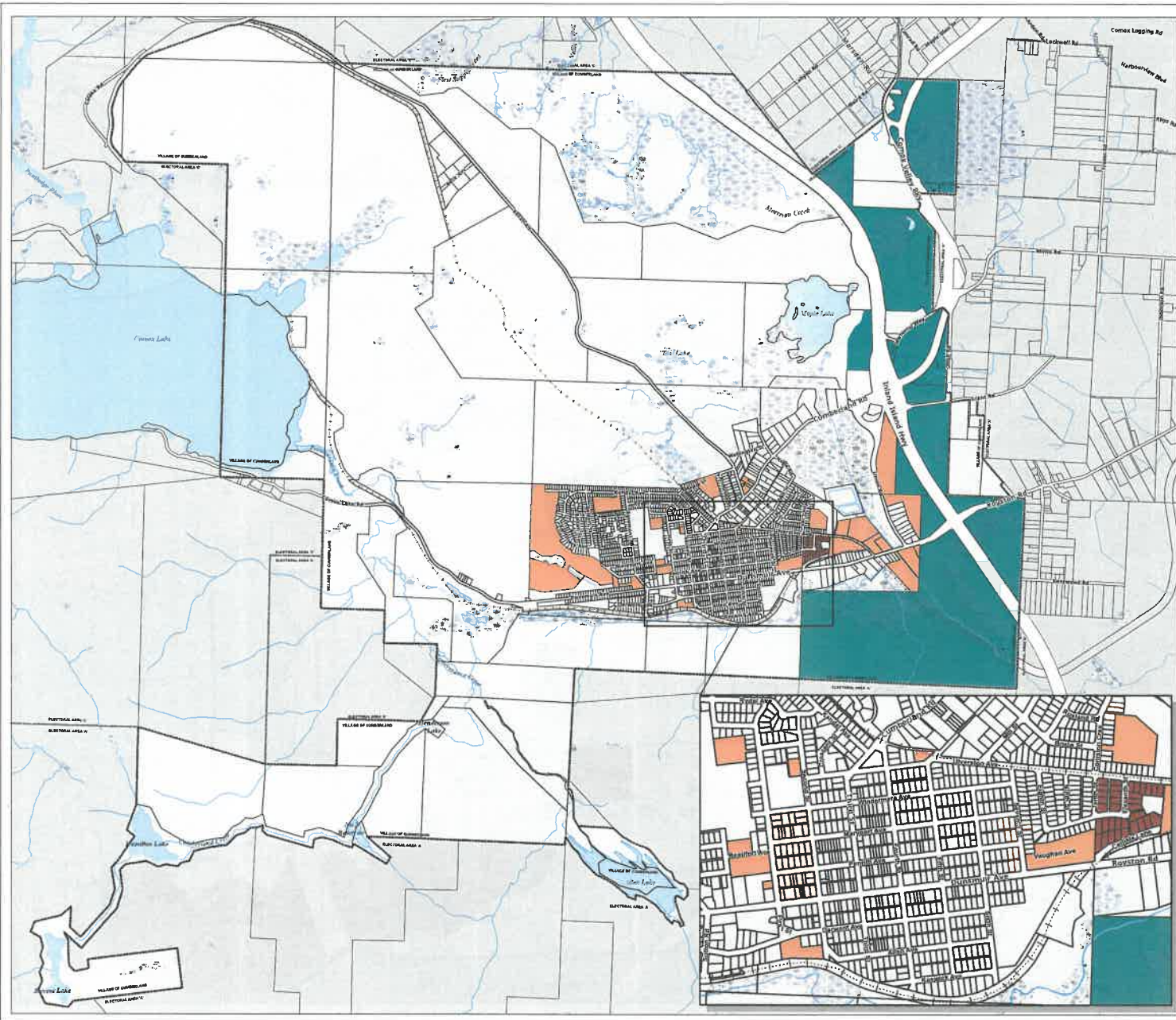


Village of Cumberland Official Community Plan Bylaw No. 1230, 2025

MAP J Form and Character Development Permit Areas

LEGEND

- DPA 6 Multi-Unit Residential and Mixed Use
 - DPA 7 Carlisle Lane
 - DPA 8 Interchange Lands
- Hydrology:**
- Ditch
 - River or Stream
 - Wetland
 - Waterbody
- Other:**
- Historic Railway
 - Village Municipal Boundary
 - CVRD Electoral Area Boundary








This map has been compiled by the CVRD for the Village of Cumberland. Neither the Village nor the CVRD accept responsibility or liability for any errors, omissions or inaccuracies of the supporting data.

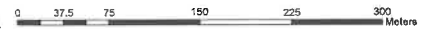


Village of Cumberland Official Community Plan Bylaw No. 1230, 2025

MAP K HCA-1 Heritage Conservation Area

LEGEND

-  HCA-1 Heritage Conservation Area
- Hydrology:**
 -  River or Stream
 -  Wetland
- Other:**
 -  Historic Railway
 -  Village Municipal Boundary



This map has been compiled by the CVMS for the Mayor of Cumberland. Neither the Village nor the CVMS accept responsibility or liability for any errors, omissions or inaccuracies of the supporting data.



Village of Cumberland Official Community Plan Bylaw No. 1230, 2025

MAP L Historic Neighbourhoods

LEGEND

Historic Neighbourhoods:

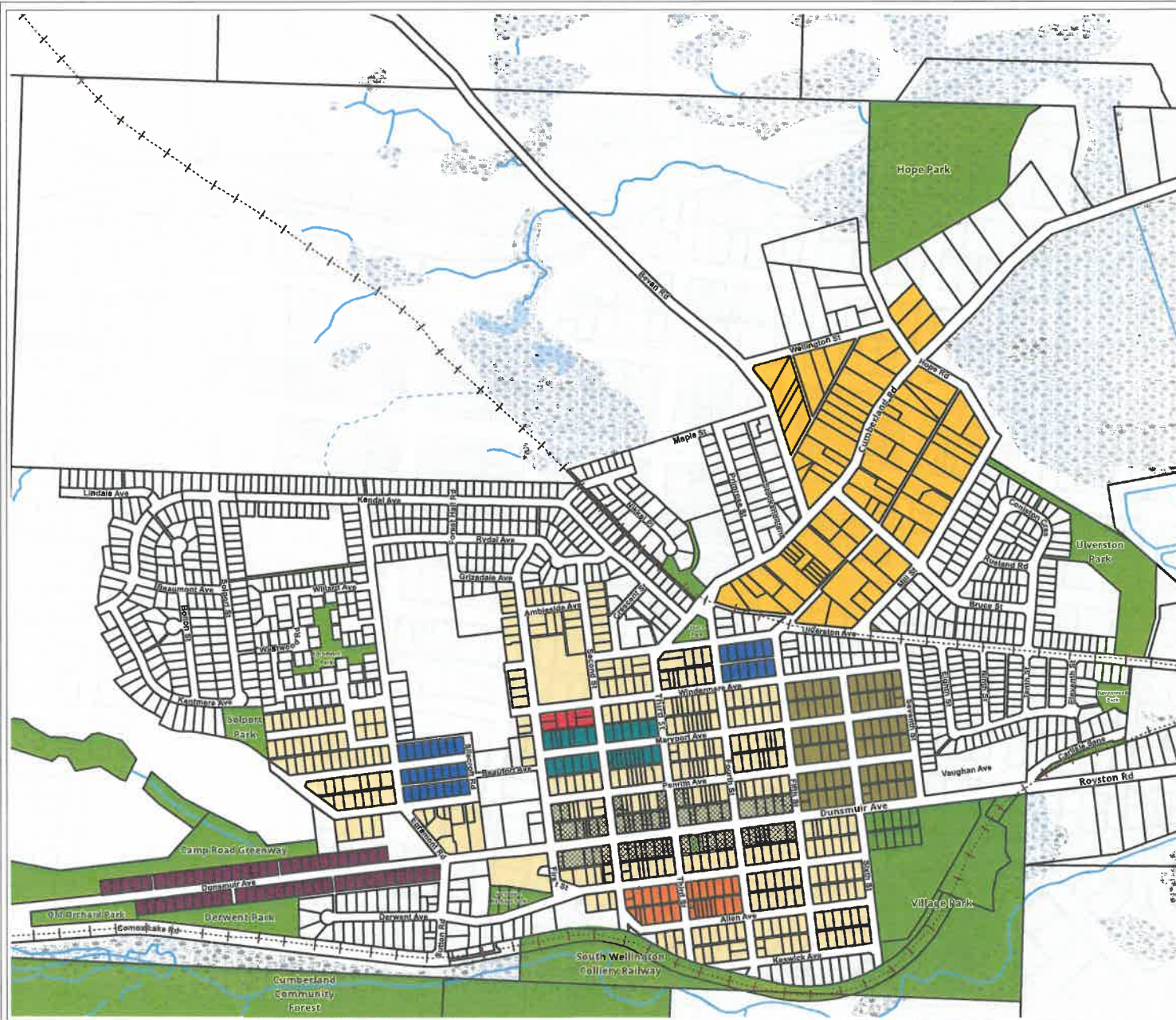
- Camp Road
- Doctors Row
- Fernwood Heights
- Veterans Housing
- New Bevan
- Jerusalem
- 42nd Street
- Other historic neighbourhoods - subdivision pre 1930

Hydrology:

- Ditch
- River or Stream
- Wetland

Other:

- Historic Railway
- Municipal Park
- Village Municipal Boundary



This map has been compiled by the CVD for the Mayor of Cumberland. Neither the Village nor the CVD accept responsibility or liability for any errors, omissions or inaccuracies of the supporting data.



Village of Cumberland Official Community Plan Bylaw No. 1230, 2025